

XYLB antibody

Catalog No: #22282

Orders: order@signalwayantibody.comSupport: tech@signalwayantibody.com

Description

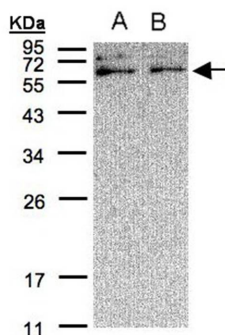
Product Name	XYLB antibody
Host Species	Rabbit
Clonality	Polyclonal
Purification	Purified by antigen-affinity chromatography.
Applications	WB
Species Reactivity	Hu
Immunogen Type	Peptide
Immunogen Description	Synthetic peptide contain a sequence corresponding to a region within amino acids 473 and 536 of Human XYLB
Target Name	XYLB
Other Names	FLJ10343; FLJ12539; FLJ22075
Accession No.	Swiss-Prot:O75191Gene ID:9942
Uniprot	O75191
GeneID	9942;
Concentration	1mg/ml
Formulation	Supplied in 0.1M Tris-buffered saline with 10% Glycerol (pH7.0). 0.01% Thimerosal was added as a preservative.
Storage	Store at -20°C for long term preservation (recommended). Store at 4°C for short term use.

Application Details

Predicted MW: 58kd

Western blotting: 1:500-1:3000

Images



Sample(30 ug of whole cell lysate)

A: A431

B: H1299

12% SDS PAGE

Primary antibody diluted at 1: 500

Background

The protein encoded by this gene shares 22% sequence identity with Hemophilus influenzae xylulokinase, and even higher identity to other gene

products in *C.elegans* (45%) and yeast (31-35%), which are thought to belong to a family of enzymes that include fucokinase, gluconokinase, glycerokinase and xylulokinase. These proteins play important roles in energy metabolism. Multiple transcripts resulting from use of alternate polyadenylation sites have been noted for this gene. [provided by RefSeq]

Note: This product is for in vitro research use only