

# Histone H2B(Di-Methyl-Lys43) Rabbit Polyclonal Antibody

Catalog No: #HW066

Orders: [order@signalwayantibody.com](mailto:order@signalwayantibody.com)  
Support: [tech@signalwayantibody.com](mailto:tech@signalwayantibody.com)

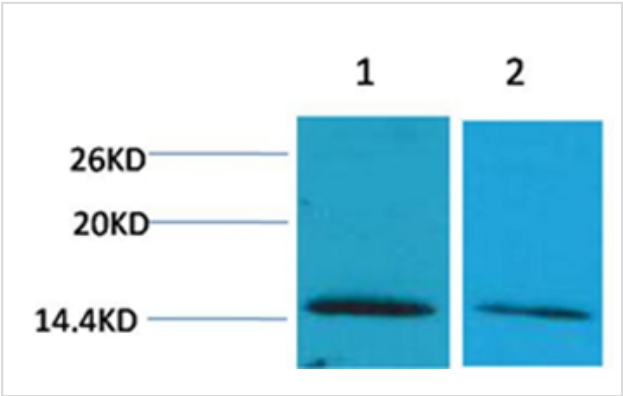
## Description

Product Name	Histone H2B(Di-Methyl-Lys43) Rabbit Polyclonal Antibody
Host Species	Rabbit
Clonality	Polyclonal
Purification	Affinity purification using immunogen.
Applications	WB
Species Reactivity	Hu Rt Ms
Specificity	The Histone H2B(Di-methyl-Lys43) Rabbit Polyclonal Antibody detects endogenous Histone H2B (Di-methyl-Lys43) protein.
Immunogen Type	peptide
Immunogen Description	A synthetic Di-methylated peptide corresponding to residues surrounding Lys43 of human histone H2B.
Target Name	Histone H2B(Di-Methyl-Lys43)
Modification	Methyl
Other Names	H2B GL105 antibody; H2B.1 antibody; Histone H2B type 1B antibody; HIST1H2BB antibody
Accession No.	Swiss-Prot#:P33778
Uniprot	P33778
GeneID	3018;
SDS-PAGE MW	14kd
Concentration	1.0mg/ml
Formulation	Rabbit Antiserum, containing 0.02% sodium azide as Preservative and 50% Glycerol.
Storage	Store at -20°C

## Application Details

Western blotting: 1:500~1:1000

## Images



Western blot analysis of 1) Hela, 2)3T3, using #HW066 diluted at 1:2,000.

## Background

---

Histone H2B is one of the 5 main histone proteins involved in the structure of chromatin in eukaryotic cells

---

Note: This product is for in vitro research use only