

## SFMBT1 antibody

Catalog No: #22284

Orders: order@signalwayantibody.com

Support: tech@signalwayantibody.com

## Description

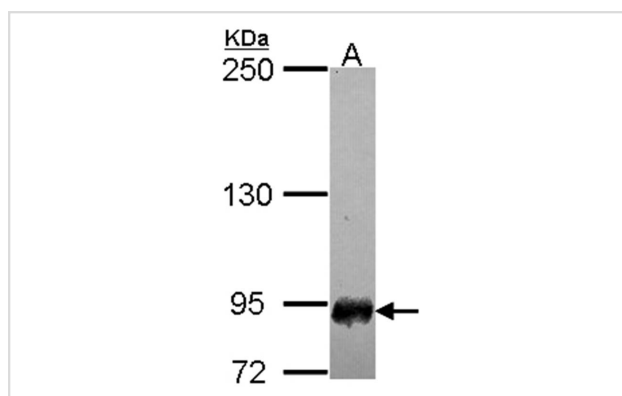
Product Name	SFMBT1 antibody
Host Species	Rabbit
Clonality	Polyclonal
Purification	Purified by antigen-affinity chromatography.
Applications	WB
Species Reactivity	Hu
Immunogen Type	Recombinant protein
Immunogen Description	Recombinant protein fragment contain a sequence corresponding to a region within amino acids 13 and 195 of SFMBT1
Target Name	SFMBT1
Accession No.	Swiss-Prot:Q9UHH3Gene ID:51460
Uniprot	Q9UHH3
GeneID	51460;
Concentration	0.6mg/ml
Formulation	Supplied in 0.1M Tris-buffered saline with 20% Glycerol (pH7.0). 0.01% Thimerosal was added as a preservative.
Storage	Store at -20°C for long term preservation (recommended). Store at 4°C for short term use.

## Application Details

Predicted MW: 98kd

Western blotting: 1:500-1:3000

## Images



Sample (30 ug of whole cell lysate)  
A: IMR32  
7.5% SDS PAGE  
Primary antibody diluted at 1: 3000

## Background

This gene shares high similarity with the Drosophila Scm (sex comb on midleg) gene. It encodes a protein which contains four malignant brain tumor repeat (mbt) domains and may be involved in antigen recognition. Several alternative splice variants have been characterized. [provided by RefSeq]

---

Note: This product is for in vitro research use only