

RAPGEF5 antibody

Catalog No: #22286

Orders: order@signalwayantibody.comSupport: tech@signalwayantibody.com

Description

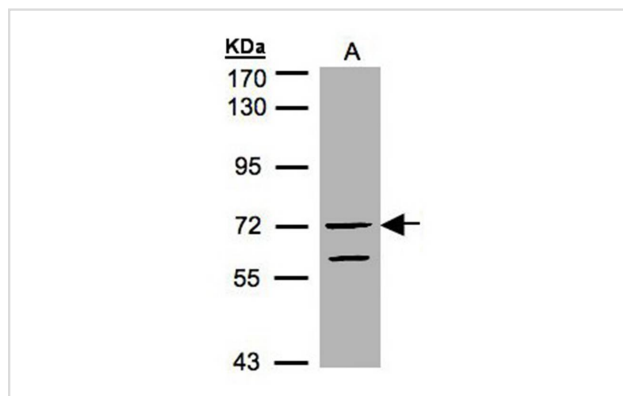
Product Name	RAPGEF5 antibody
Host Species	Rabbit
Clonality	Polyclonal
Purification	Purified by antigen-affinity chromatography.
Applications	WB
Species Reactivity	Hu
Immunogen Type	Recombinant protein
Immunogen Description	Recombinant protein fragment contain a sequence corresponding to a region within amino acids 1 and 179 of Human RAPGEF5
Target Name	RAPGEF5
Other Names	GFR; KIAA0277; MR-GEF; REPAC
Accession No.	Swiss-Prot:Q92565Gene ID:9771
Uniprot	Q92565
GeneID	9771;
Concentration	0.7mg/ml
Formulation	Supplied in 0.1M Tris-buffered saline with 10% Glycerol (pH7.0). 0.01% Thimerosal was added as a preservative.
Storage	Store at -20°C for long term preservation (recommended). Store at 4°C for short term use.

Application Details

Predicted MW: 85kd

Western blotting: 1:500-1:3000

Images



Sample(30 ug of whole cell lysate)
A: HeLa S3
7.5% SDS PAGE
Primary antibody diluted at 1: 1000

Background

Members of the RAS (see HRAS; MIM 190020) subfamily of GTPases function in signal transduction as GTP/GDP-regulated switches that cycle

between inactive GDP- and active GTP-bound states. Guanine nucleotide exchange factors (GEFs), such as RAPGEF5, serve as RAS activators by promoting acquisition of GTP to maintain the active GTP-bound state and are the key link between cell surface receptors and RAS activation (Rebhun et al., 2000 [PubMed 10934204]).[supplied by OMIM]

Note: This product is for in vitro research use only