

mStrawberry Rabbit Polyclonal Antibody

Catalog No: #38083

Orders: order@signalwayantibody.comSupport: tech@signalwayantibody.com

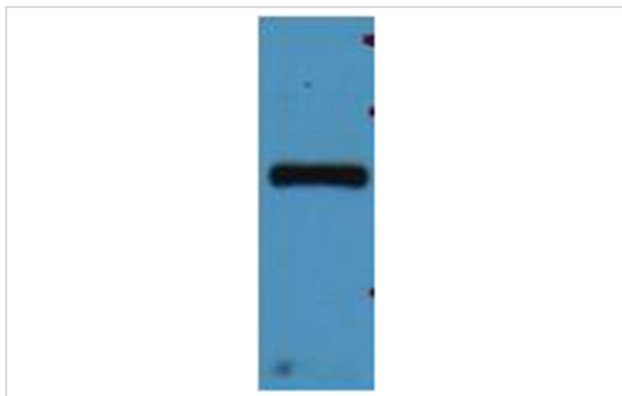
Description

| | |
|---------------|---|
| Product Name | mStrawberry Rabbit Polyclonal Antibody |
| Host Species | Rabbit |
| Clonality | Polyclonal |
| Purification | Affinity purification using immunogen. |
| Applications | WB |
| Specificity | The mStrawberry Mouse Polyclonal Antibody detects mStrawberry & mStrawberry Tag protein. |
| Target Name | mStrawberry |
| Other Names | mStrawberry |
| Concentration | 1.0mg/ml |
| Formulation | IgG in phosphate buffered saline (without Mg ²⁺ and Ca ²⁺), pH 7.4, 150mM NaCl, 0.02% sodium azide and 50% glycerol. |
| Storage | Store at -20°C |

Application Details

Western blotting: 1:2000~1:5000

Images



Western blot analysis of mStrawberry recombinant protein, using #38083 diluted at 1:5,000.

Background

mStrawberry is a bright, monomeric red fluorescent protein which was developed in Dr. Roger Tsien's lab by directed mutagenesis of mRFP.

Note: This product is for in vitro research use only