

Flag-Tag Mouse Monoclonal Antibody

Catalog No: #T519



Orders: order@signalwayantibody.com
Support: tech@signalwayantibody.com

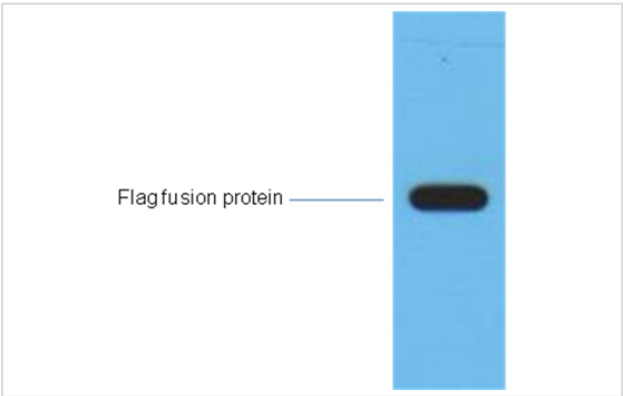
Description

Product Name	Flag-Tag Mouse Monoclonal Antibody
Host Species	Mouse
Clonality	Monoclonal
Purification	Affinity purification using immunogen.
Applications	WB,IF IP
Species Reactivity	Hu Ms Rt
Specificity	The Flag tag antibody can recognize C-terminal, internal, and N-terminal Flag-tag fusion?proteins.
Target Name	Flag-Tag
Concentration	1.0mg/ml
Formulation	Mouse IgG1 in phosphate buffered saline (without Mg2+ and Ca2+), pH 7.4, 150mM NaCl, 0.02% sodium azide and 50% glycerol.
Storage	Store at -20°C

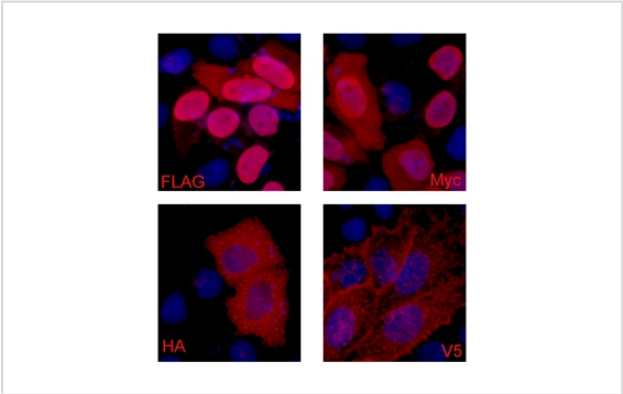
Application Details

Western blotting: 1:5000~1:10000
Immunofluorescence: 1:2000
Immunoprecipitation: 1:5000

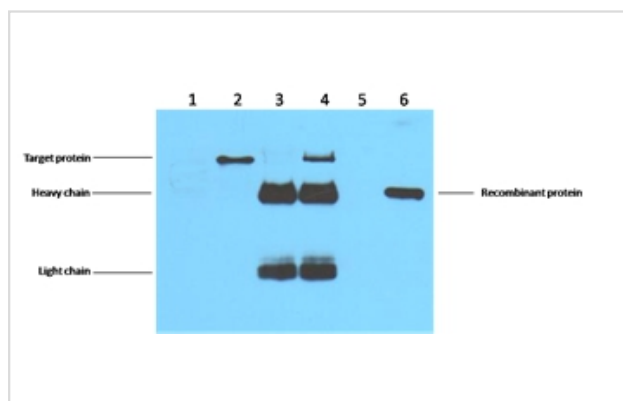
Images



1ug Flag fusion protein+ Primary antibody #T519 dilution at 1:10,000.



IF analysis of 293 cells transfected with a Flag-tag protein, using anti-Flag-Tag Mouse mAb #T519 at a 1:2000 dilution (blue DAPI, red anti-Flag).



IP antibody use B£B15ug Flag Mouse IgG1 per ml
 Lysate B£B~WB 1:5000
 1B'B'untransfected 293 cell lysate
 2B'B'transfected 293 cell lysate with Flag-tag fusion protein
 3B'B'IP (transfected 293+ normal Mouse IgG+Protein G agarose)
 4B'B'IP (transfected 293+anti- Flag mAb+ Protein G agarose)
 5B'B'IP (transfected 293+Protein G)
 6B'B'Recombinant protein (E.coli).

Background

The DYKDDDDK peptide (Flag-tag) is a small component of an epitope which does not appear to interfere with the bioactivity or the biodistribution of the recombinant protein. It has been used extensively as a general epitope tag in expression vectors. It can be used for affinity chromatography, then used to separate recombinant, overexpressed protein from wild-type protein expressed by the host organism. It can also be used in the isolation of protein complexes with multiple subunits. A Flag-tag can be used in many different assays that require recognition by an antibody. If there is no antibody against the studied protein, adding a Flag-tag to this protein allows one to follow the protein with an antibody against the Flag sequence.

Note: This product is for in vitro research use only