

# $\alpha$ -tubulin Mouse Monoclonal Antibody

Catalog No: #37981

Orders: [order@signalwayantibody.com](mailto:order@signalwayantibody.com)Support: [tech@signalwayantibody.com](mailto:tech@signalwayantibody.com)

## Description

Product Name	$\alpha$ -tubulin Mouse Monoclonal Antibody
Host Species	Mouse
Clonality	Monoclonal
Purification	Affinity purification using immunogen.
Applications	WB,IHC,IF
Species Reactivity	Hu Rt Ms
Specificity	The $\alpha$ -tubulin antibody can detects endogenous $\alpha$ -tubulin protein.
Target Name	$\alpha$ -tubulin
Other Names	TUBA1A;TUBA3;Tubulin alpha-1A chain;Alpha-tubulin 3;Tubulin B-alpha-1;Tubulin alpha-3 chain
Accession No.	Swiss-Prot:Q71U36Gene ID:7846
Uniprot	Q71U36
GeneID	7846;
SDS-PAGE MW	52kd
Concentration	1.0mg/ml
Formulation	Mouse IgG1 in phosphate buffered saline (without Mg <sup>2+</sup> and Ca <sup>2+</sup> ), pH 7.4, 150mM NaCl, 0.02% sodium azide and 50% glycerol.
Storage	Store at -20°C

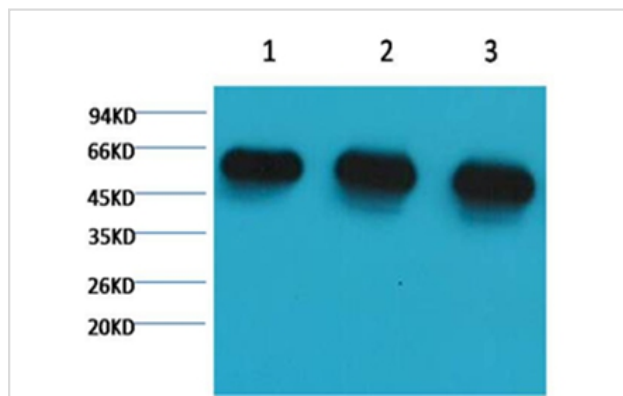
## Application Details

WB dilution: 1:5000~1:10000

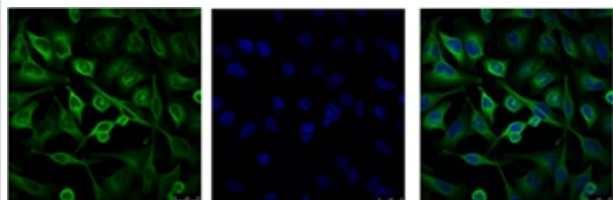
IHC dilution:1:200 IF dilution: 1:100~1:200

IP dilution: 1:200

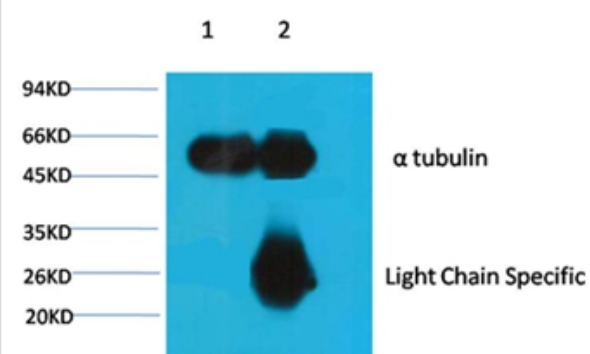
## Images



Western blot analysis of 1) HeLa, 2) Rat Brain Tissue, 3) Mouse Brain Tissue, using #37981 diluted at 1:5,000.



IF analysis of HeLa cells with #37981 (Left) and DAPI (Right) diluted at 1:100.

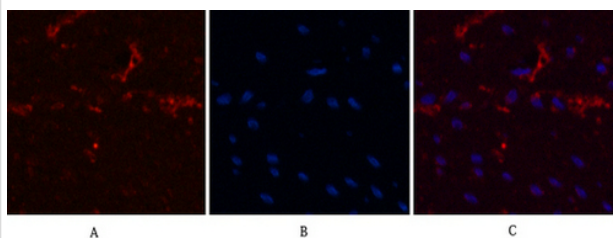


1B'B'Input: Mouse Brain Tissue Lysate

2B'B'IP product: IP dilute 1:200

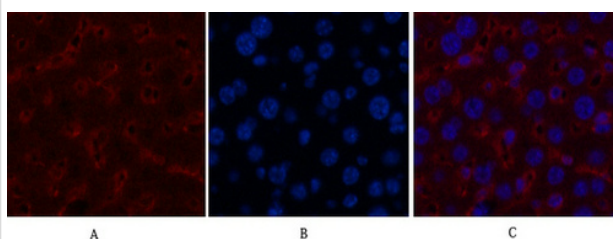
Western blot analysis: primary antibody : #37981 1:5,000

Secondary antibody: Goat anti-Mouse IgG, Light chain specific, 1:5,000



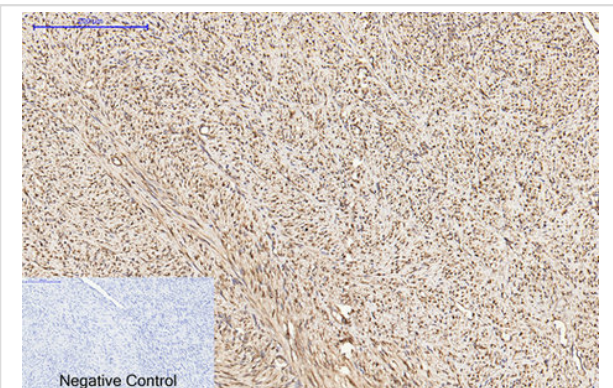
Immunofluorescence analysis of Human-colon-cancer tissue.

1, -tubulin Monoclonal Antibody(8F11)(red) was diluted at 1:200(4°C, overnight). 2, Cy3 labeled Secondary antibody was diluted at 1:300(room temperature, 50min). 3, Picture B: DAPI(blue) 10min. Picture A: Target. Picture B: DAPI. Picture C: merge of A+B



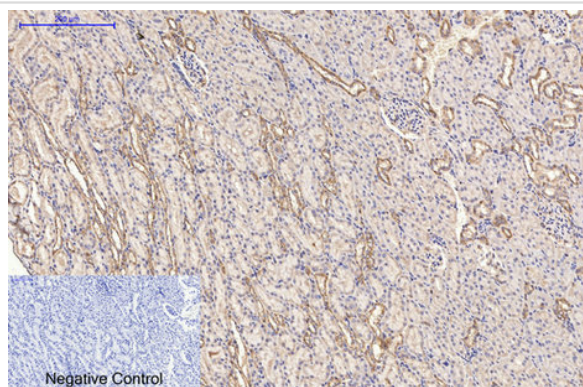
Immunofluorescence analysis of Mouse-liver tissue.

1, -tubulin Monoclonal Antibody(8F11)(red) was diluted at 1:200(4°C, overnight). 2, Cy3 labeled Secondary antibody was diluted at 1:300(room temperature, 50min). 3, Picture B: DAPI(blue) 10min. Picture A: Target. Picture B: DAPI. Picture C: merge of A+B

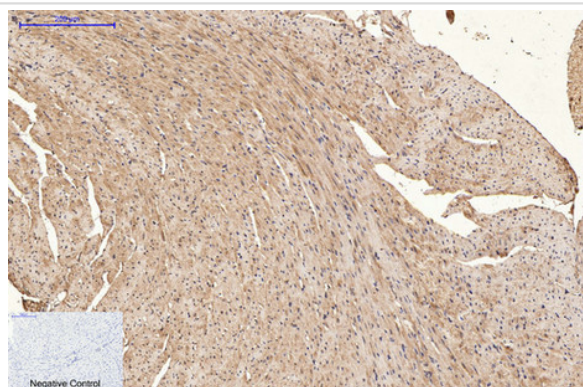


Immunohistochemical analysis of paraffin-embedded

Human-uterus-cancer tissue. 1, -tubulin Monoclonal Antibody(8F11) was diluted at 1:200(4°C, overnight). 2, Sodium citrate pH 6.0 was used for antibody retrieval(>98°C, 20min). 3, Secondary antibody was diluted at 1:200(room temperature, 30min). Negative control was used by secondary antibody only.



Immunohistochemical analysis of paraffin-embedded Rat-kidney tissue. 1,-tubulin Monoclonal Antibody(8F11) was diluted at 1:200(4C,overnight). 2, Sodium citrate pH 6.0 was used for antibody retrieval(>98C,20min). 3,Secondary antibody was diluted at 1:200(room tempeRature, 30min). Negative control was used by secondary antibody only.



Immunohistochemical analysis of paraffin-embedded Mouse-heart tissue. 1,-tubulin Monoclonal Antibody(8F11) was diluted at 1:200(4C,overnight). 2, Sodium citrate pH 6.0 was used for antibody retrieval(>98C,20min). 3,Secondary antibody was diluted at 1:200(room tempeRature, 30min). Negative control was used by secondary antibody only.

## Background

Tubulin is one of several members of a small family of globular proteins. The tubulin superfamily includes five distinct families, the alpha-, beta-, gamma-, delta-, and epsilon-tubulins. The most common members of the tubulin family are  $\alpha$ -tubulin and  $\beta$ -tubulin, the proteins that make up microtubules. Each has a molecular weight of approximately 55 KD. Microtubules are assembled from dimers of  $\alpha$ - and  $\beta$ -tubulin

Note: This product is for in vitro research use only