

OMG antibody

Catalog No: #22290



Orders: order@signalwayantibody.com
Support: tech@signalwayantibody.com

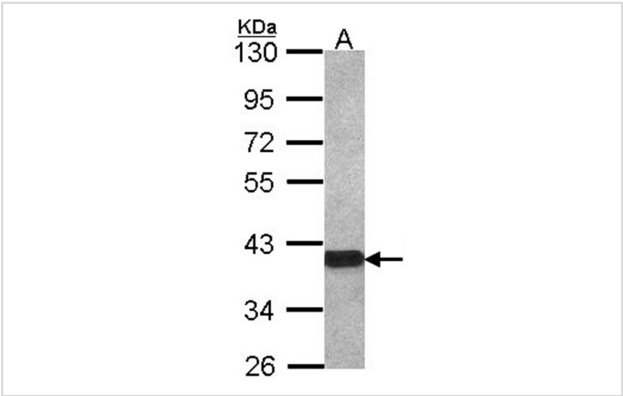
Description

Product Name	OMG antibody
Host Species	Rabbit
Clonality	Polyclonal
Purification	Purified by antigen-affinity chromatography.
Applications	WB
Species Reactivity	Hu
Immunogen Type	Peptide
Immunogen Description	Synthetic peptide contain a sequence corresponding to a region within amino acids 249 and 301 (P23515) of OMG
Target Name	OMG
Accession No.	Swiss-Prot:P23515Gene ID:4974
Uniprot	P23515
GeneID	4974;
Concentration	1mg/ml
Formulation	Supplied in 1XPBS, 10% Glycerol (pH7.0). 0.01% Thimerosal was added as a preservative.
Storage	Store at -20°C for long term preservation (recommended). Store at 4°C for short term use.

Application Details

Predicted MW: 50kd
Western blotting: 1:500-1:3000

Images



Sample (30 ug of whole cell lysate)
A: IMR32
10% SDS PAGE
Primary antibody diluted at 1: 1000

Note: This product is for in vitro research use only