

α tubulin Mouse Monoclonal Antibody(Zebrafish Specific)

Catalog No: #38059

Orders: order@signalwayantibody.comSupport: tech@signalwayantibody.com

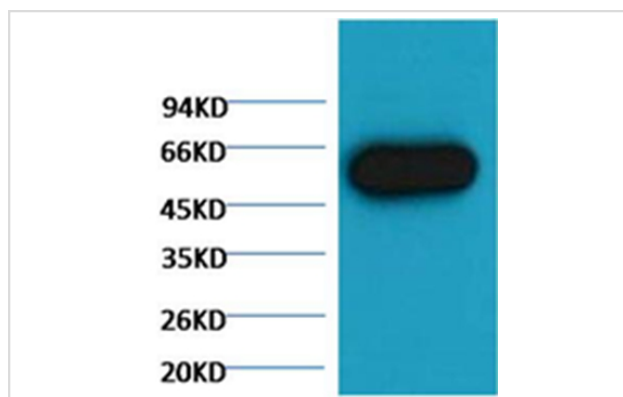
Description

| | |
|--------------------|--|
| Product Name | α tubulin Mouse Monoclonal Antibody(Zebrafish Specific) |
| Host Species | Mouse |
| Clonality | Monoclonal |
| Purification | Affinity purification using immunogen. |
| Applications | WB |
| Species Reactivity | Zebrafish |
| Specificity | The α-tubulin antibody can detects Zebrafish endogenous α-tubulin protein.. |
| Target Name | α tubulin |
| Other Names | alpha-tubulin N-acetyltransferase; ATAT1; C6orf134; CF134; chromosome 6 open reading frame 134; DKFZp547J097; FLJ13158; LOC79969; MEC-17; MEC17; Nbla00487 |
| Accession No. | Swiss-Prot#:Q71U36 |
| Uniprot | Q71U36 |
| GeneID | 7846; |
| SDS-PAGE MW | 52kd |
| Concentration | 1.0mg/ml |
| Formulation | Mouse IgG1 in phosphate buffered saline (without Mg ²⁺ and Ca ²⁺), pH 7.4, 150mM NaCl, 0.02% sodium azide and 50% glycerol. |
| Storage | Store at -20°C |

Application Details

Western blotting: 1:5000~1:10000

Images



Western blot analysis of Zebrafish skeletal muscle, using #38059 diluted at 1:5,000.

Background

Tubulin is one of several members of a small family of globular proteins. The tubulin superfamily includes five distinct families, the alpha-, beta-,

gamma-, delta-, and epsilon-tubulins. The most common members of the tubulin family are α -tubulin and β -tubulin, the proteins that make up microtubules. Each has a molecular weight of approximately 55 KD. Microtubules are assembled from dimers of α - and β -tubulin.

Note: This product is for in vitro research use only