

KCC4 antibody

Catalog No: #22291

Orders: order@signalwayantibody.comSupport: tech@signalwayantibody.com

Description

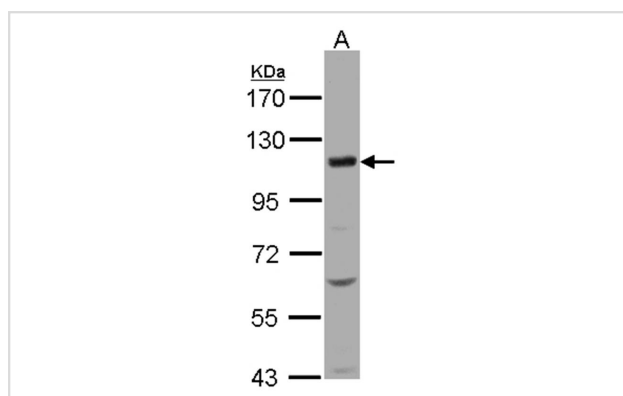
Product Name	KCC4 antibody
Host Species	Rabbit
Clonality	Polyclonal
Purification	Affinity purified by Protein A.
Applications	WB
Species Reactivity	Hu
Immunogen Type	Recombinant protein
Immunogen Description	Recombinant protein fragment contain a sequence corresponding to a region within amino acids 845 and 1056 of Human SLC12A7
Target Name	KCC4
Accession No.	Swiss-Prot:Q9Y666Gene ID:10723
Uniprot	Q9Y666
GeneID	10723;
Concentration	4.7mg/ml
Formulation	Supplied in 0.1M Tris-buffered saline with 10% Glycerol (pH7.0). 0.01% Thimerosal was added as a preservative.
Storage	Store at -20°C for long term preservation (recommended). Store at 4°C for short term use.

Application Details

Predicted MW: 119kd

Western blotting: 1:500-1:3000

Images



Sample(30 ug of whole cell lysate)
A: H1299
7.5% SDS PAGE
Primary antibody diluted at 1: 500

Background

Mediates electroneutral potassium-chloride cotransport when activated by cell swelling. May mediate K(+) uptake into Deiters' cells in the cochlea and contribute to K(+) recycling in the inner ear. Important for the survival of cochlear outer and inner hair cells and the maintenance of the organ of Corti.

May be required for basolateral Cl(-) extrusion in the kidney and contribute to renal acidification.

Note: This product is for in vitro research use only