

ALAS-E antibody

Catalog No: #22293

Orders: order@signalwayantibody.comSupport: tech@signalwayantibody.com

Description

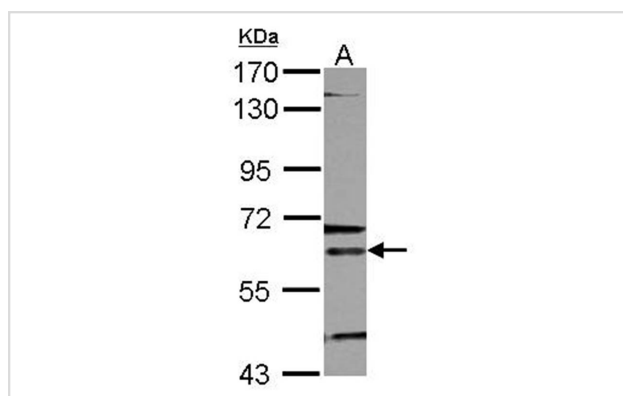
Product Name	ALAS-E antibody
Host Species	Rabbit
Clonality	Polyclonal
Purification	Purified by antigen-affinity chromatography.
Applications	WB
Species Reactivity	Hu
Immunogen Type	Recombinant protein
Immunogen Description	Recombinant protein fragment contain a sequence corresponding to a region within amino acids 211 and 567 of Human ALAS2
Target Name	ALAS-E
Accession No.	Swiss-Prot:P22557Gene ID:212
Uniprot	P22557
GeneID	212;
Concentration	1mg/ml
Formulation	Supplied in 0.1M Tris-buffered saline with 10% Glycerol (pH7.0). 0.01% Thimerosal was added as a preservative.
Storage	Store at -20°C for long term preservation (recommended). Store at 4°C for short term use.

Application Details

Predicted MW: 65kd

Western blotting: 1:500-1:3000

Images



Sample (30 ug of whole cell lysate)
A: K562
7.5% SDS PAGE
Primary antibody diluted at 1: 500

Background

The product of this gene specifies an erythroid-specific mitochondrially located enzyme. The encoded protein catalyzes the first step in the heme biosynthetic pathway. Defects in this gene cause X-linked pyridoxine-responsive sideroblastic anemia. Alternatively spliced transcript variants

encoding different isoforms have been identified. [provided by RefSeq]

Note: This product is for in vitro research use only