

SCY1 like 3 antibody

Catalog No: #22300



Orders: [order@signalwayantibody.com](mailto:order@signalwayantibody.com)  
Support: [tech@signalwayantibody.com](mailto:tech@signalwayantibody.com)

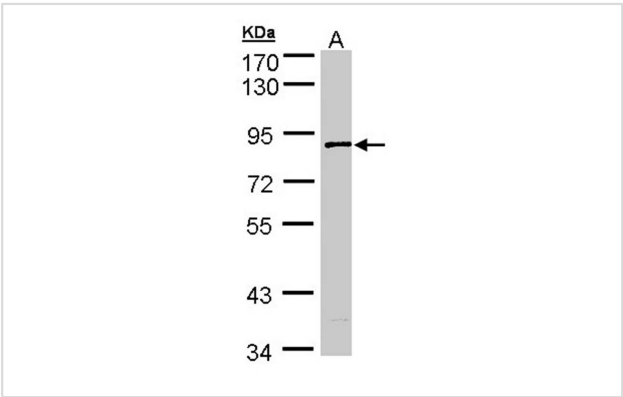
Description

Product Name	SCY1 like 3 antibody
Host Species	Rabbit
Clonality	Polyclonal
Purification	Purified by antigen-affinity chromatography.
Applications	WB IHC IF
Species Reactivity	Hu
Immunogen Type	Recombinant protein
Immunogen Description	Recombinant protein fragment contain a sequence corresponding to a region within amino acids 80 and 559 of Human SCYL3
Target Name	SCY1 like 3
Accession No.	Swiss-Prot:Q8IZE3Gene ID:57147
Uniprot	Q8IZE3
GeneID	57147;
Concentration	1mg/ml
Formulation	Supplied in 0.1M Tris-buffered saline with 10% Glycerol (pH7.0). 0.01% Thimerosal was added as a preservative.
Storage	Store at -20°C for long term preservation (recommended). Store at 4°C for short term use.

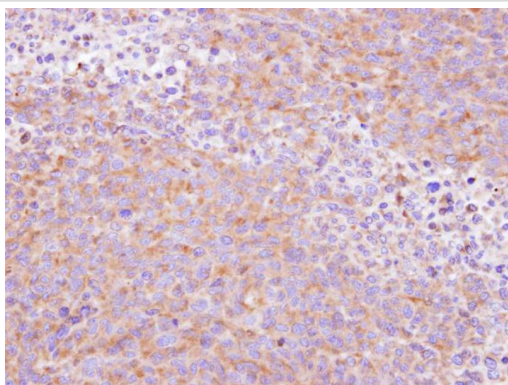
Application Details

Predicted MW: 77kd  
Western blotting: 1:500-1:3000  
Immunohistochemistry: 1:100-1:250  
Immunofluorescence: 1:100-1:200

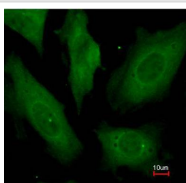
Images



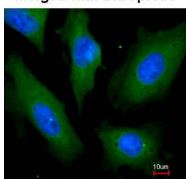
Sample (30 ug of whole cell lysate)  
A: A431  
7.5% SDS PAGE  
Primary antibody diluted at 1: 1000



Immunohistochemical analysis of paraffin-embedded H1299 xenograft, using SCY1 like 3 antibody at 1: 500 dilution.



Merged with DNA probe



Immunofluorescence analysis of paraformaldehyde-fixed HeLa, using SCY1 like 3 antibody at 1: 200 dilution.

## Background

May play a role in regulating cell adhesion/migration complexes in migrating cells

Note: This product is for in vitro research use only