

CD34 antibody

Catalog No: #38153

Package Size: #38153-1 50ul #38153-2 100ul

Orders: order@signalwayantibody.comSupport: tech@signalwayantibody.com

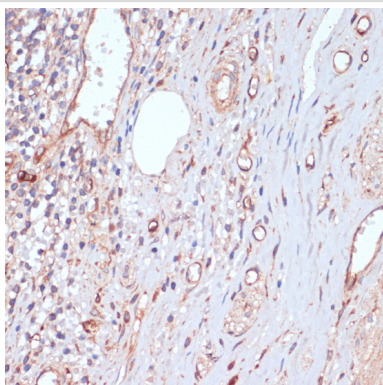
Description

Product Name	CD34 antibody
Host Species	Rabbit
Clonality	Polyclonal
Purification	Antibodies were purified by affinity purification using immunogen.
Applications	WB,IHC,IF
Species Reactivity	Human,Rat
Specificity	The antibody detects endogenous level of total CD34 protein.
Immunogen Type	Recombinant Protein
Immunogen Description	Recombinant protein of human CD34 .
Target Name	CD34
Other Names	Hematopoietic progenitor cell antigen CD34;CD34;
Accession No.	Swiss-Prot#: P28906NCBI Gene ID: 947
Uniprot	P28906
GeneID	947;
SDS-PAGE MW	41kd
Concentration	1.0mg/ml
Formulation	Supplied at 1.0mg/mL in phosphate buffered saline (without Mg ²⁺ and Ca ²⁺), pH 7.4, 150mM NaCl, 0.02% sodium azide and 50% glycerol.
Storage	Store at -20°C

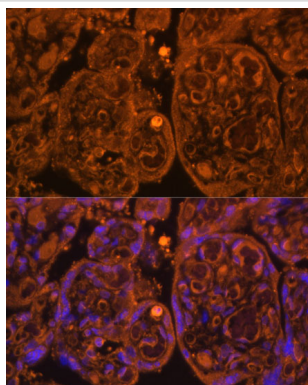
Application Details

WB□1:500 - 1:2000IHC□1:50 - 1:200IF□1:50 - 1:200

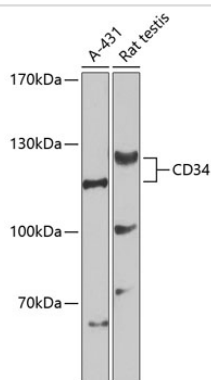
Images



Immunohistochemistry of paraffin-embedded human appendix using CD34 at dilution of 1:100 (40x lens).



Immunofluorescence analysis of human placenta using CD34 at dilution of 1:100. Blue: DAPI for nuclear staining.



Western blot analysis of extracts of various cell lines, using CD34 at 1:1000 dilution.

Background

CD34 is a type I transmembrane glycoprophosphoprotein expressed by hematopoietic stem/progenitor cells, vascular endothelium and some fibroblasts (1). CD34 expression has been the hallmark used to identify hematopoietic stem cells for many years. CD34⁺ hematopoietic stem cells expand and differentiate into all the lymphohematopoietic lineages upon cytokine or growth factor stimulation and lose CD34 expression upon differentiation. However, recent studies performed in various laboratories conflict with that convention (2). The extracellular domain of CD34 is homologous to CD43, a protein involved in cell-cell adhesion, and CD34 has been shown to function as a negative regulator of cell adhesion (3). CD34 associates with CrkL but not CrkII, is a substrate for PKC, and activation of PKC is coupled with surface expression of CD34 (1,4).

Note: This product is for in vitro research use only