

## TGM2 antibody

Catalog No: #38158

Package Size: #38158-1 50ul #38158-2 100ul

Orders: [order@signalwayantibody.com](mailto:order@signalwayantibody.com)Support: [tech@signalwayantibody.com](mailto:tech@signalwayantibody.com)

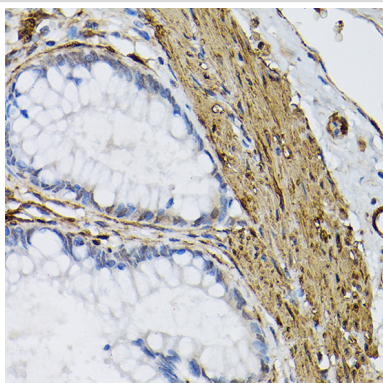
## Description

Product Name	TGM2 antibody
Host Species	Rabbit
Clonality	Polyclonal
Isotype	IgG
Purification	Affinity purification
Applications	WB,IHC,IF
Species Reactivity	Human,Mouse,Rat
Specificity	The antibody detects endogenous level of total TGM2 protein.
Immunogen Type	Recombinant Protein
Immunogen Description	Recombinant protein of human TGM2
Target Name	TGM2
Other Names	TGM2;TG(C);TGC
Accession No.	Uniprot:P21980GeneID:7052
Uniprot	P21980
GeneID	7052
SDS-PAGE MW	77KDa
Concentration	1.0mg/ml
Formulation	PBS with 0.02% sodium azide,50% glycerol,pH7.3.
Storage	Store at -20°C. Avoid freeze / thaw cycles.

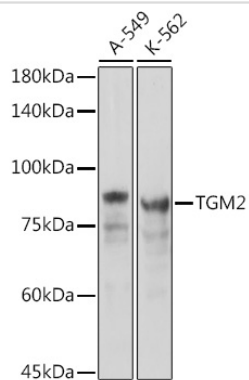
## Application Details

WB 1:500 - 1:2000IHC 1:100 - 1:200IF 1:50 - 1:200

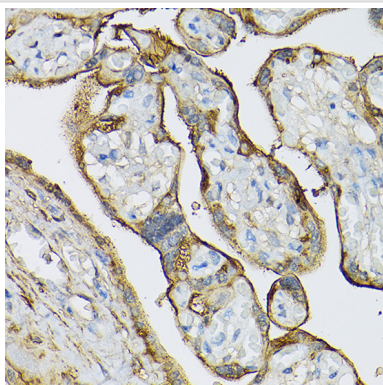
## Images



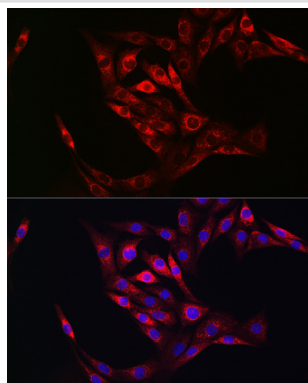
Immunohistochemistry of paraffin-embedded human colon carcinoma using TGM2 Rabbit pAb.



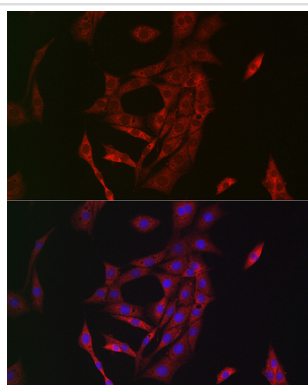
Western blot analysis of extracts of various cell lines, using TGM2 antibody.



Immunohistochemistry of paraffin-embedded human placenta using TGM2 Rabbit pAb.



Immunofluorescence analysis of NIH/3T3 cells using TGM2 antibody.



Immunofluorescence analysis of PC-12 cells using TGM2 antibody.

## Background

Transglutaminases are enzymes that catalyze the crosslinking of proteins by epsilon-gamma glutamyl lysine isopeptide bonds. While the primary structure of transglutaminases is not conserved, they all have the same amino acid sequence at their active sites and their activity is calcium-dependent. The protein encoded by this gene acts as a monomer, is induced by retinoic acid, and appears to be involved in apoptosis. Finally, the encoded protein is the autoantigen implicated in celiac disease. Two transcript variants encoding different isoforms have been found for this gene.

---

Note: This product is for in vitro research use only