

GCG antibody

Catalog No: #38190

Package Size: #38190-1 50ul #38190-2 100ul

Orders: order@signalwayantibody.comSupport: tech@signalwayantibody.com

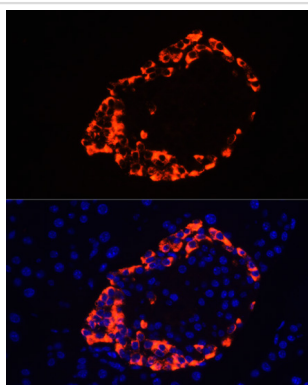
Description

Product Name	GCG antibody
Host Species	Rabbit
Clonality	Polyclonal
Purification	Antibodies were purified by affinity purification using immunogen.
Applications	IHC,IF
Species Reactivity	Human,Mouse,Rat
Specificity	The antibody detects endogenous level of total GCG protein.
Immunogen Type	Recombinant Protein
Immunogen Description	Recombinant protein of human GCG.
Target Name	GCG
Other Names	GCG;GLP 2;glucagon;GLP2;GLP1;GRPP Oxyntomodulin
Accession No.	Swiss-Prot#: P01275NCBI Gene ID: 2641
Uniprot	P01275
GeneID	2641;
SDS-PAGE MW	21kd
Concentration	1.0mg/ml
Formulation	Supplied at 1.0mg/mL in phosphate buffered saline (without Mg ²⁺ and Ca ²⁺), pH 7.4, 150mM NaCl, 0.02% sodium azide and 50% glycerol.
Storage	Store at -20°C

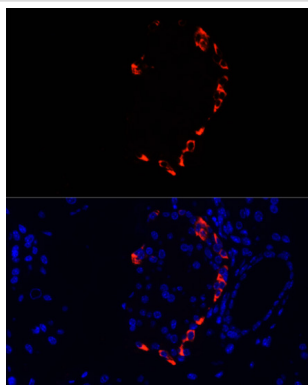
Application Details

IHC□1:100 - 1:200IF□1:100 - 1:200

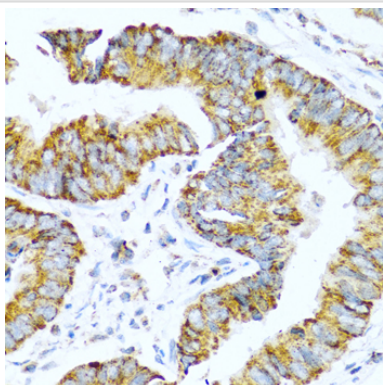
Images



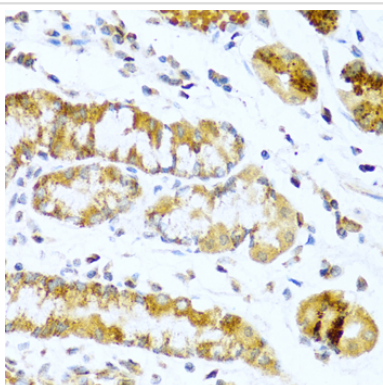
Immunofluorescence analysis of rat pancreas cells using GCG at dilution of 1:100. Blue: DAPI for nuclear staining.



Immunofluorescence analysis of mouse pancreas cells using GCG at dilution of 1:100. Blue: DAPI for nuclear staining.



Immunohistochemistry of paraffin-embedded human colon carcinoma using GCG at dilution of 1:100 (40x lens).



Immunohistochemistry of paraffin-embedded human stomach using GCG at dilution of 1:100 (40x lens).

Background

Glucose homeostasis is regulated by a variety of hormones including glucagon. Glucagon is synthesized as the precursor molecule proglucagon and is proteolytically processed to yield the mature peptide in α cells of the pancreatic islets. Glucagon causes the release of glucose from glycogen and stimulates gluconeogenesis in the liver (1,2).

Note: This product is for in vitro research use only