

CTCF antibody

Catalog No: #38199



Package Size: #38199-1 50ul #38199-2 100ul

Orders: [order@signalwayantibody.com](mailto:order@signalwayantibody.com)  
Support: [tech@signalwayantibody.com](mailto:tech@signalwayantibody.com)

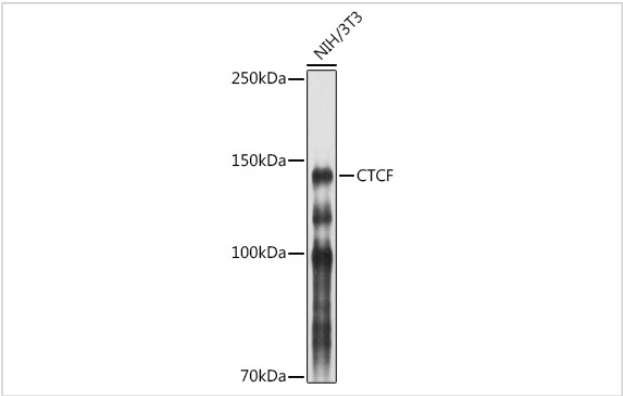
Description

Product Name	CTCF antibody
Host Species	Rabbit
Clonality	Polyclonal
Isotype	IgG
Purification	Affinity purification
Applications	WB,IHC,IF
Species Reactivity	Human,Mouse,Rat
Specificity	The antibody detects endogenous level of total CTCF protein.
Immunogen Type	Recombinant Protein
Immunogen Description	Recombinant fusion protein of human CTCF (NP_006556.1).
Target Name	CTCF
Other Names	CTCF;MRD21;CTCF
Accession No.	Uniprot:P49711GeneID:10664
Uniprot	P49711
GeneID	10664
SDS-PAGE MW	140KDa
Concentration	1.0mg/ml
Formulation	PBS with 0.02% sodium azide,50% glycerol,pH7.3.
Storage	Store at -20°C. Avoid freeze / thaw cycles.

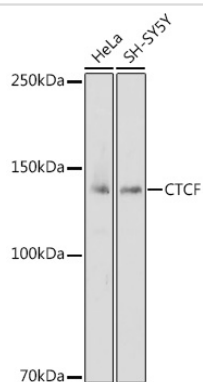
Application Details

WB 1:500 - 1:2000IHC 1:50 - 1:200IF 1:50 - 1:200

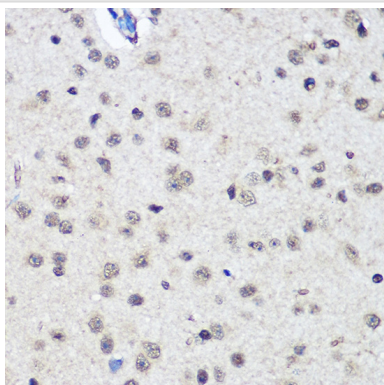
Images



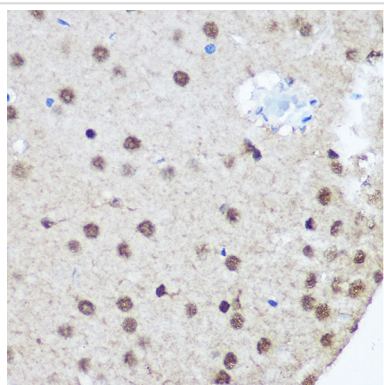
Western blot analysis of extracts of NIH/3T3 cells, using CTCF antibody.



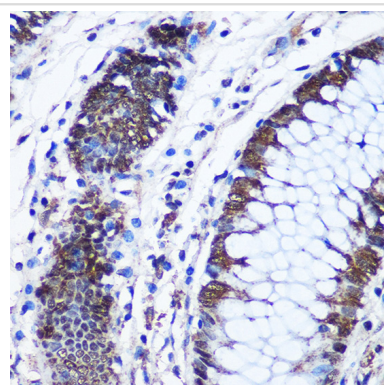
Western blot analysis of extracts of various cell lines, using CTCF antibody.



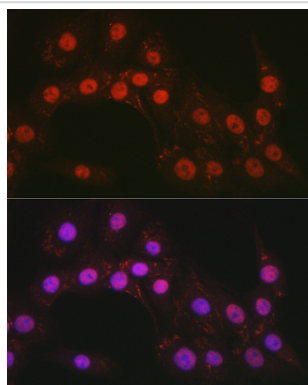
Immunohistochemistry of paraffin-embedded Mouse brain using CTCF Rabbit pAb.



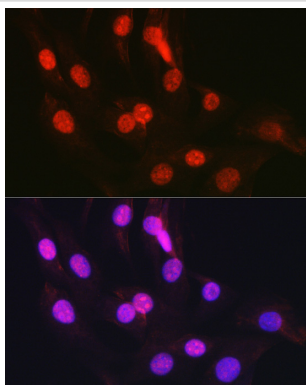
Immunohistochemistry of paraffin-embedded Rat brain using CTCF Rabbit pAb.



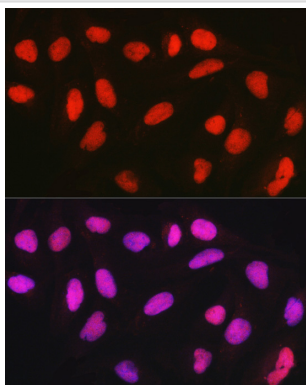
Immunohistochemistry of paraffin-embedded Human colon using CTCF Rabbit pAb.



Immunofluorescence analysis of PC-12 cells using CTCF Rabbit pAb.



Immunofluorescence analysis of NIH/3T3 cells using CTCF Rabbit pAb.



Immunofluorescence analysis of U2OS cells using CTCF Rabbit pAb.

## Background

This gene is a member of the BORIS + CTCF gene family and encodes a transcriptional regulator protein with 11 highly conserved zinc finger (ZF) domains. This nuclear protein is able to use different combinations of the ZF domains to bind different DNA target sequences and proteins. Depending upon the context of the site, the protein can bind a histone acetyltransferase (HAT)-containing complex and function as a transcriptional activator or bind a histone deacetylase (HDAC)-containing complex and function as a transcriptional repressor. If the protein is bound to a transcriptional insulator element, it can block communication between enhancers and upstream promoters, thereby regulating imprinted expression. Mutations in this gene have been associated with invasive breast cancers, prostate cancers, and Wilms' tumors. Alternatively spliced transcript variants encoding different isoforms have been found for this gene.

Note: This product is for in vitro research use only