

CALM1 antibody

Catalog No: #38212



Package Size: #38212-1 50ul #38212-2 100ul

Orders: order@signalwayantibody.com
Support: tech@signalwayantibody.com

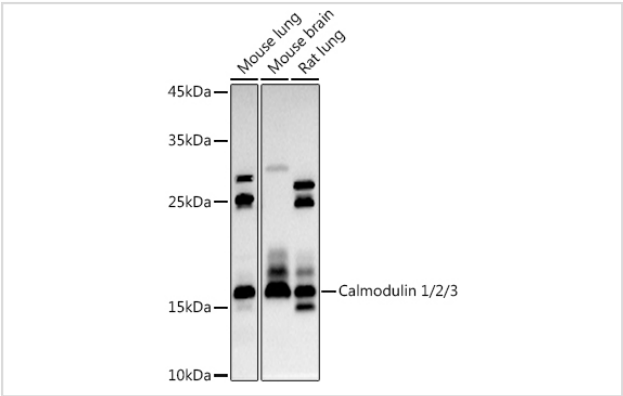
Description

Product Name	CALM1 antibody
Host Species	Rabbit
Clonality	Polyclonal
Isotype	IgG
Purification	Affinity purification
Applications	WB
Species Reactivity	Human,Mouse,Rat
Specificity	The antibody detects endogenous level of total CALM1 protein.
Immunogen Type	Recombinant Protein
Immunogen Description	Recombinant fusion protein of human Calmodulin 1/2/3 (NP_001734.1).
Target Name	CALM1
Other Names	CALM1;CALML2;CAMI;CPVT4;DD132;LQT14;PHKD;caM
Accession No.	Uniprot:P62158GeneID:801
Uniprot	P62158
GeneID	801
SDS-PAGE MW	17KDa
Concentration	1.0mg/ml
Formulation	PBS with 0.02% sodium azide,50% glycerol,pH7.3.
Storage	Store at -20°C. Avoid freeze / thaw cycles.

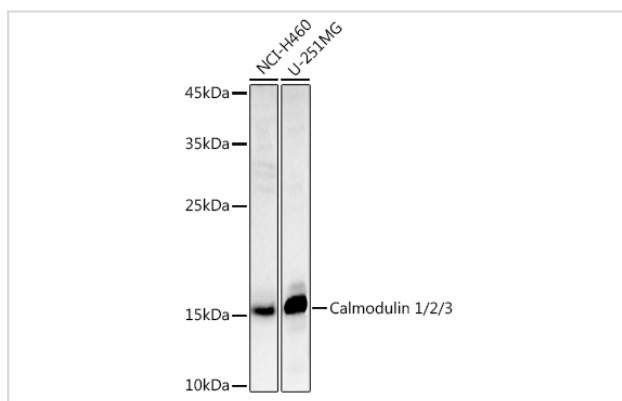
Application Details

WB 1:500 - 1:2000

Images



Western blot analysis of extracts of various cell lines, using Calmodulin 1/2/3 antibody.



Western blot analysis of extracts of various cell lines, using Calmodulin 1/2/3 antibody.

Background

This gene encodes a member of the EF-hand calcium-binding protein family. It is one of three genes which encode an identical calcium binding protein which is one of the four subunits of phosphorylase kinase. Two pseudogenes have been identified on chromosome 7 and X. Multiple transcript variants encoding different isoforms have been found for this gene.

Note: This product is for in vitro research use only