

HS1BP3 antibody

Catalog No: #22311

Orders: order@signalwayantibody.comSupport: tech@signalwayantibody.com

Description

Product Name	HS1BP3 antibody
Host Species	Rabbit
Clonality	Polyclonal
Purification	Purified by antigen-affinity chromatography.
Applications	WB IHC
Species Reactivity	Hu
Immunogen Type	Peptide
Immunogen Description	Synthetic peptide contain a sequence corresponding to a region within amino acids 320 and 382 of Human HS1BP3
Target Name	HS1BP3
Accession No.	Swiss-Prot:Q53T59Gene ID:64342
Uniprot	Q53T59
GeneID	64342;
Concentration	1mg/ml
Formulation	Supplied in 0.1M Tris-buffered saline with 10% Glycerol (pH7.0). 0.01% Thimerosal was added as a preservative.
Storage	Store at -20°C for long term preservation (recommended). Store at 4°C for short term use.

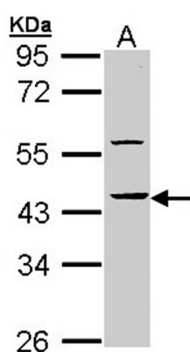
Application Details

Predicted MW: 43kd

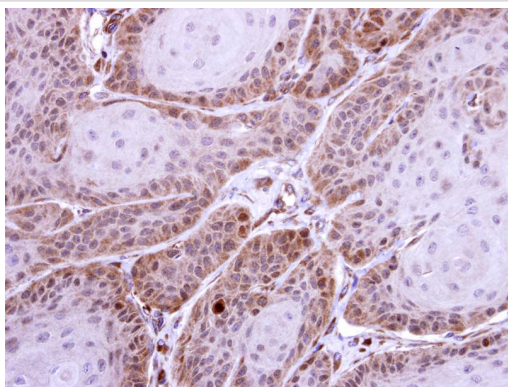
Western blotting: 1:500-1:3000

Immunohistochemistry: 1:50-1:500

Images



Sample (30 ug of whole cell lysate)
A: Molt-4
10% SDS PAGE
Primary antibody diluted at 1: 10000



Immunohistochemical analysis of paraffin-embedded Cal27 xenograft, using HS1BP3 antibody at 1: 500 dilution.

Background

The protein encoded by this gene shares similarity with mouse Hs1bp3, an Hcls1/Hs1-interacting protein that may be involved in lymphocyte activation. [provided by RefSeq]

Note: This product is for in vitro research use only