

CYP1B1 antibody

Catalog No: #38234



Package Size: #38234-1 50ul #38234-2 100ul

Orders: [order@signalwayantibody.com](mailto:order@signalwayantibody.com)  
Support: [tech@signalwayantibody.com](mailto:tech@signalwayantibody.com)

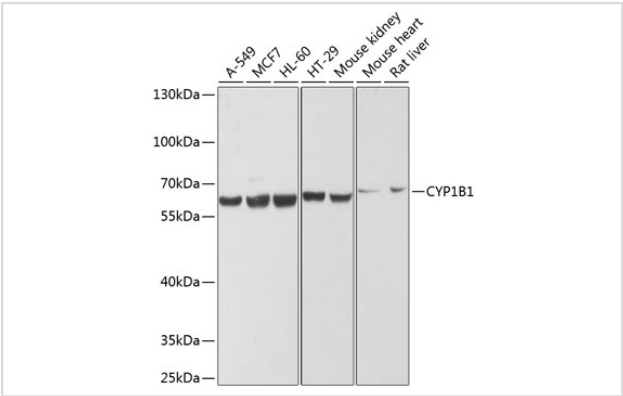
Description

Product Name	CYP1B1 antibody
Host Species	Rabbit
Clonality	Polyclonal
Isotype	IgG
Purification	Affinity purification
Applications	WB,IHC
Species Reactivity	Human,Mouse,Rat
Specificity	The antibody detects endogenous level of total CYP1B1 protein.
Immunogen Type	Recombinant Protein
Immunogen Description	Recombinant fusion protein of human CYP1B1 (NP_000095.2).
Target Name	CYP1B1
Other Names	CYP1B1;ASGD6;CP1B;CYPIB1;GLC3A;P4501B1
Accession No.	Uniprot:Q16678GeneID:1545
Uniprot	Q16678
GeneID	1545
SDS-PAGE MW	60kDa
Concentration	1.0mg/ml
Formulation	PBS with 0.02% sodium azide,50% glycerol,pH7.3.
Storage	Store at -20°C. Avoid freeze / thaw cycles.

Application Details

WB 1:500 - 1:2000IHC 1:50 - 1:100

Images



Western blot analysis of extracts of various cell lines, using CYP1B1 antibody.

## Background

---

This gene encodes a member of the cytochrome P450 superfamily of enzymes. The cytochrome P450 proteins are monooxygenases which catalyze many reactions involved in drug metabolism and synthesis of cholesterol, steroids and other lipids. The enzyme encoded by this gene localizes to the endoplasmic reticulum and metabolizes procarcinogens such as polycyclic aromatic hydrocarbons and 17beta-estradiol. Mutations in this gene have been associated with primary congenital glaucoma; therefore it is thought that the enzyme also metabolizes a signaling molecule involved in eye development, possibly a steroid.

---

Note: This product is for in vitro research use only