

## ARSA antibody

Catalog No: #22314

Orders: [order@signalwayantibody.com](mailto:order@signalwayantibody.com)Support: [tech@signalwayantibody.com](mailto:tech@signalwayantibody.com)

## Description

Product Name	ARSA antibody
Host Species	Rabbit
Clonality	Polyclonal
Purification	Purified by antigen-affinity chromatography.
Applications	WB IHC IF
Species Reactivity	Hu
Immunogen Type	Recombinant protein
Immunogen Description	Recombinant protein fragment contain a sequence corresponding to a region within amino acids 45 and 249 of ARSA
Target Name	ARSA
Accession No.	Swiss-Prot:O43681Gene ID:439
Uniprot	O43681
GeneID	439;
Concentration	0.8mg/ml
Formulation	Supplied in 0.1M Tris-buffered saline with 20% Glycerol (pH7.0). 0.01% Thimerosal was added as a preservative.
Storage	Store at -20°C for long term preservation (recommended). Store at 4°C for short term use.

## Application Details

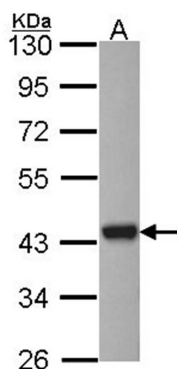
Predicted MW: 39kd

Western blotting: 1:500-1:3000

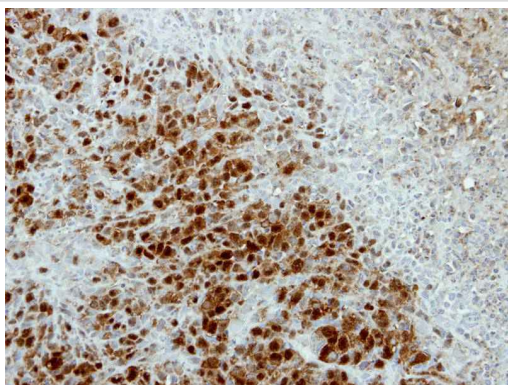
Immunohistochemistry: 1:100-1:500

Immunofluorescence: 1:100-1:200

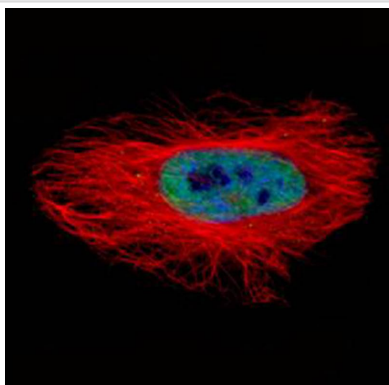
## Images



Sample (30 ug of whole cell lysate)  
A: HCT116  
10% SDS PAGE  
Primary antibody diluted at 1: 1000



Immunohistochemical analysis of paraffin-embedded SCM1 xenograft, using ARSA antibody at 1: 500 dilution.



Confocal immunofluorescence analysis (Olympus FV10i) of paraformaldehyde-fixed HeLa, using ASNA1 antibody (Green) at 1: 500 dilution and alpha-tubulin antibody (Red) at 1: 2500.

## Background

ASNA1 is the human homolog of the bacterial *arsA* gene. In *E. coli*, ArsA ATPase is the catalytic component of a multisubunit oxyanion pump that is responsible for resistance to arsenicals and antimonials.[supplied by OMIM]

Note: This product is for in vitro research use only