

LTA antibody

Catalog No: #38252



Package Size: #38252-1 50ul #38252-2 100ul

Orders: order@signalwayantibody.com
Support: tech@signalwayantibody.com

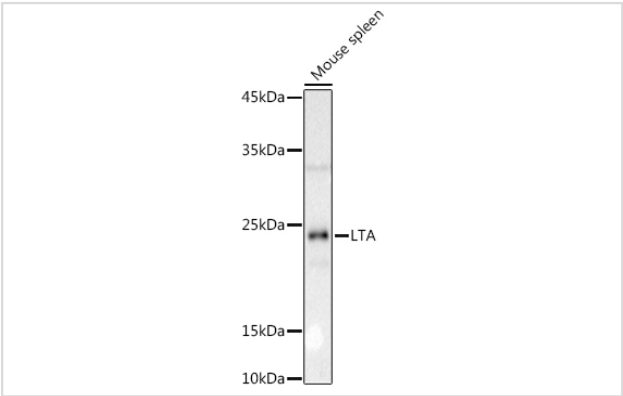
Description

Product Name	LTA antibody
Host Species	Rabbit
Clonality	Polyclonal
Isotype	IgG
Purification	Affinity purification
Applications	WB,IHC
Species Reactivity	Human,Mouse
Specificity	The antibody detects endogenous level of total LTA protein.
Immunogen Type	Recombinant Protein
Immunogen Description	Recombinant fusion protein of human LTA (NP_000586.2).
Target Name	LTA
Other Names	LTA;LT;TNFB;TNFSF1;TNLG1E;LT-alpha
Accession No.	Uniprot:P01374GeneID:4049
Uniprot	P01374
GeneID	4049
SDS-PAGE MW	22KDa
Concentration	1.0mg/ml
Formulation	PBS with 0.02% sodium azide,50% glycerol,pH7.3.
Storage	Store at -20°C. Avoid freeze / thaw cycles.

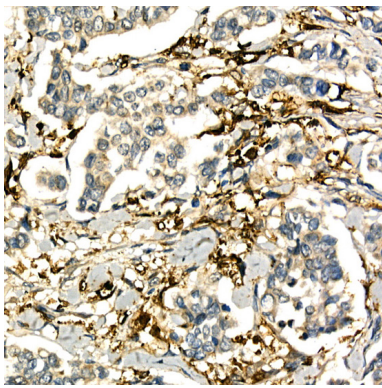
Application Details

WB 1:500 - 1:2000IHC 1:50 - 1:200

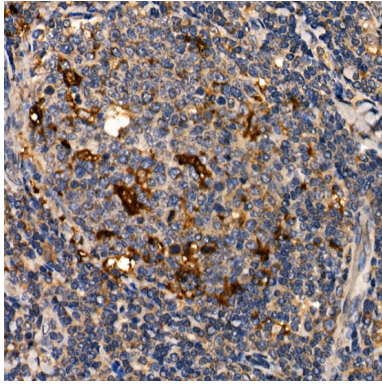
Images



Western blot analysis of extracts of Mouse spleen, using LTA antibody.



Immunohistochemistry of paraffin-embedded human breast cancer using LTA Rabbit pAb.



Immunohistochemistry of paraffin-embedded human tonsil using LTA Rabbit pAb.

Background

The encoded protein, a member of the tumor necrosis factor family, is a cytokine produced by lymphocytes. The protein is highly inducible, secreted, and forms heterotrimers with lymphotoxin-beta which anchor lymphotoxin-alpha to the cell surface. This protein also mediates a large variety of inflammatory, immunostimulatory, and antiviral responses, is involved in the formation of secondary lymphoid organs during development and plays a role in apoptosis. Genetic variations in this gene are associated with susceptibility to leprosy type 4, myocardial infarction, non-Hodgkin's lymphoma, and psoriatic arthritis. Alternatively spliced transcript variants have been observed for this gene.

Note: This product is for in vitro research use only