

TPH1 antibody

Catalog No: #38257



Package Size: #38257-1 50ul #38257-2 100ul

Orders: [order@signalwayantibody.com](mailto:order@signalwayantibody.com)  
Support: [tech@signalwayantibody.com](mailto:tech@signalwayantibody.com)

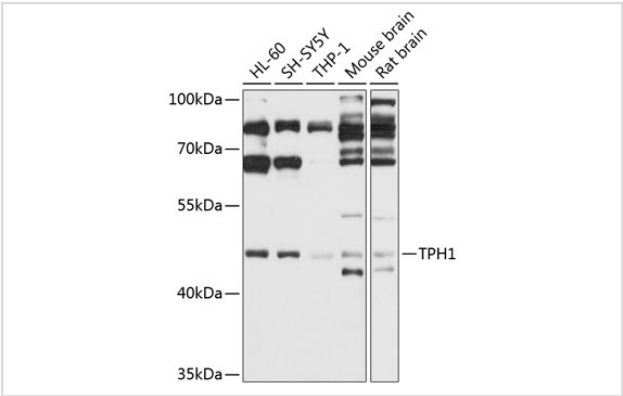
Description

Product Name	TPH1 antibody
Host Species	Rabbit
Clonality	Polyclonal
Purification	Antibodies were purified by affinity purification using immunogen.
Applications	WB
Species Reactivity	Human,Mouse,Rat
Specificity	The antibody detects endogenous level of total TPH1 protein.
Immunogen Type	Recombinant Protein
Immunogen Description	Recombinant protein of human TPH1.
Target Name	TPH1
Other Names	TPH1;MGC119994;TPRH;TRPH;Tryptophan 5-hydroxylase 1;
Accession No.	Swiss-Prot#: P17752NCBI Gene ID: 7166
Uniprot	P17752
GeneID	7166;
SDS-PAGE MW	55kd
Concentration	1.0mg/ml
Formulation	Supplied at 1.0mg/mL in phosphate buffered saline (without Mg2+ and Ca2+), pH 7.4, 150mM NaCl, 0.02% sodium azide and 50% glycerol.
Storage	Store at -20°C

Application Details

WB 1:500 - 1:2000

Images



Western blot analysis of extracts of various cell lines, using TPH1 at 1:1000 dilution.

## Background

---

Tryptophan hydroxylase (TPH) is the rate-limiting enzyme in the biosynthesis of serotonin (1) by converting tryptophan to 5-hydroxy-L-tryptophan (2). Two isoforms of TPH exist: TPH-1 is mainly expressed in the periphery, whereas the expression of TPH-2 is restricted to neuronal cells and the central nervous system (3). Most of the serotonin found throughout the body is synthesized by TPH-1 in enterochromaffin cells of the gastrointestinal tract. Targeted disruption of the tph1 gene results in low levels of circulating and tissue serotonin (4).

---

Note: This product is for in vitro research use only