

PROS1 antibody

Catalog No: #38263



Package Size: #38263-1 50ul #38263-2 100ul

Orders: order@signalwayantibody.com
Support: tech@signalwayantibody.com

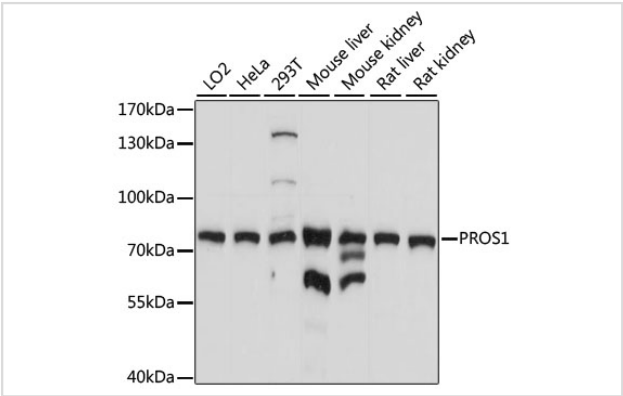
Description

Product Name	PROS1 antibody
Host Species	Rabbit
Clonality	Polyclonal
Purification	Antibodies were purified by affinity purification using immunogen.
Applications	WB
Species Reactivity	Human,Mouse,Rat
Specificity	The antibody detects endogenous level of total PROS1 protein.
Immunogen Type	Recombinant Protein
Immunogen Description	Recombinant protein of human PROS1.
Target Name	PROS1
Other Names	PSA; PROS; PS21; PS22; PS23; PS24; PS25; THPH5; THPH6;
Accession No.	Swiss-Prot#: P07225NCBI Gene ID: 5627
Uniprot	P07225
GeneID	5627;
SDS-PAGE MW	70kd
Concentration	1.0mg/ml
Formulation	Supplied at 1.0mg/mL in phosphate buffered saline (without Mg2+ and Ca2+), pH 7.4, 150mM NaCl, 0.02% sodium azide and 50% glycerol.
Storage	Store at -20°C

Application Details

WB 1:500 - 1:2000

Images



Western blot analysis of extracts of various cell lines, using PROS1 at 1:1000 dilution.

Background

This gene encodes a vitamin K-dependent plasma protein that functions as a cofactor for the anticoagulant protease, activated protein C (APC) to inhibit blood coagulation. It is found in plasma in both a free, functionally active form and also in an inactive form complexed with C4b-binding protein. Mutations in this gene result in autosomal dominant hereditary thrombophilia. An inactive pseudogene of this locus is located at an adjacent region on chromosome 3. [provided by RefSeq, Feb 2009]

Note: This product is for in vitro research use only