

DDT antibody

Catalog No: #22316



Orders: order@signalwayantibody.com
Support: tech@signalwayantibody.com

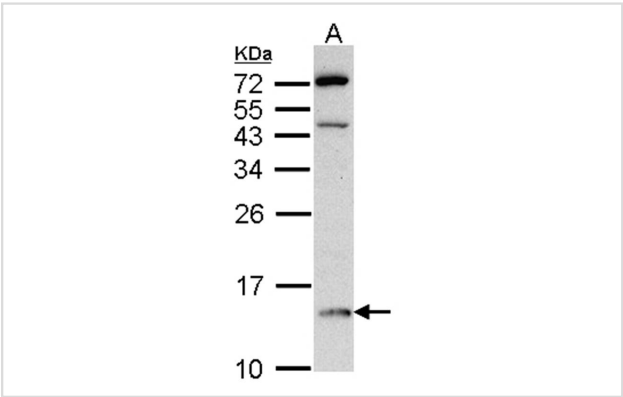
Description

Product Name	DDT antibody
Host Species	Rabbit
Clonality	Polyclonal
Purification	Purified by antigen-affinity chromatography.
Applications	WB IHC
Species Reactivity	Hu
Immunogen Type	Recombinant protein
Immunogen Description	Recombinant protein fragment contain a sequence corresponding to a region within amino acids 1 and 85 of Human DDT
Target Name	DDT
Accession No.	Swiss-Prot:P30046Gene ID:1652
Uniprot	P30046
GeneID	1652;
Concentration	1mg/ml
Formulation	Supplied in 0.1M Tris-buffered saline with 20% Glycerol (pH7.0). 0.01% Thimerosal was added as a preservative.
Storage	Store at -20°C for long term preservation (recommended). Store at 4°C for short term use.

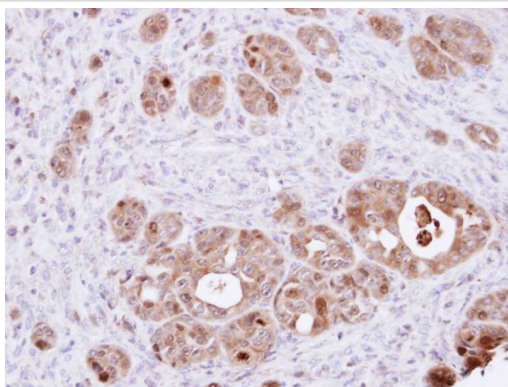
Application Details

Predicted MW: 13kd
Western blotting: 1:500-1:3000
Immunohistochemistry: 1:100-1:250

Images



Sample (30 ug of whole cell lysate)
A: Raji
15% SDS PAGE
Primary antibody diluted at 1: 500



Immunohistochemical analysis of paraffin-embedded NCIN87 xenograft, using DDT antibody at 1: 100 dilution.

Background

D-dopachrome tautomerase converts D-dopachrome into 5,6-dihydroxyindole. The DDT gene is related to the migration inhibitory factor (MIF) in terms of sequence, enzyme activity, and gene structure. DDT and MIF are closely linked on chromosome 22. [provided by RefSeq]

Note: This product is for in vitro research use only