

ALPPL2 antibody

Catalog No: #22318

Orders: order@signalwayantibody.comSupport: tech@signalwayantibody.com

Description

Product Name	ALPPL2 antibody
Host Species	Rabbit
Clonality	Polyclonal
Purification	Purified by antigen-affinity chromatography.
Applications	WB IHC IF
Species Reactivity	Hu
Immunogen Type	Recombinant protein
Immunogen Description	Recombinant protein fragment contain a sequence corresponding to a region within amino acids 46 and 354 of ALPPL2
Target Name	ALPPL2
Accession No.	Swiss-Prot:P10696Gene ID:251
Uniprot	P10696
GeneID	251;
Concentration	1mg/ml
Formulation	Supplied in 0.1M Tris-buffered saline with 20% Glycerol (pH7.0). 0.01% Thimerosal was added as a preservative.
Storage	Store at -20°C for long term preservation (recommended). Store at 4°C for short term use.

Application Details

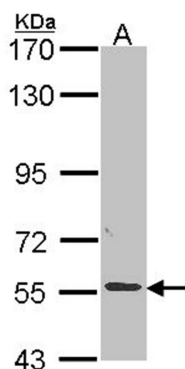
Predicted MW: 57kd

Western blotting: 1:500-1:3000

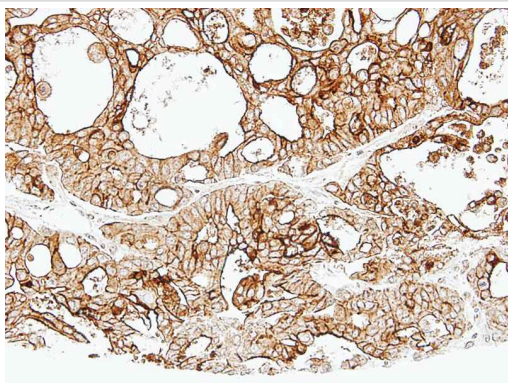
Immunohistochemistry: 1:100-1:500

Immunofluorescence: 1:100-1:200

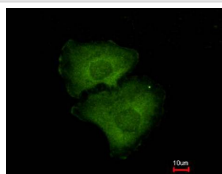
Images



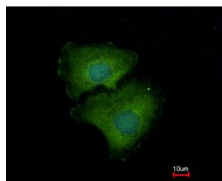
Sample (30 ug of whole cell lysate)
A: A549
7.5% SDS PAGE
ALPPL2 antibody diluted at 1: 1000



Immunohistochemical analysis of paraffin-embedded Breast, using ALPPL2 antibody at 1: 500 dilution.



Costained with Hoechst 33342



Immunofluorescence analysis of methanol-fixed A549, using ALPPL2 antibody at 1: 500 dilution.

Background

There are at least four distinct but related alkaline phosphatases: intestinal, placental, placental-like, and liver/bone/kidney (tissue non-specific). The product of this gene is a membrane bound glycosylated enzyme, localized to testis, thymus and certain germ cell tumors, that is closely related to both the placental and intestinal forms of alkaline phosphatase. [provided by RefSeq]

Note: This product is for in vitro research use only