

CLN2 antibody

Catalog No: #22319

Orders: order@signalwayantibody.comSupport: tech@signalwayantibody.com

Description

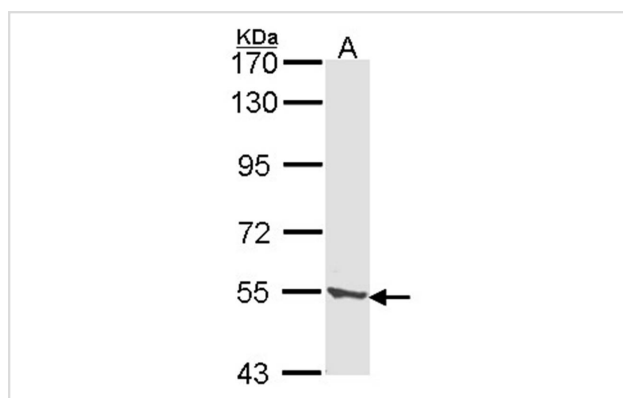
Product Name	CLN2 antibody
Host Species	Rabbit
Clonality	Polyclonal
Purification	Purified by antigen-affinity chromatography.
Applications	WB
Species Reactivity	Hu
Immunogen Type	Recombinant protein
Immunogen Description	Recombinant protein fragment contain a sequence corresponding to a region within amino acids 224 and 562 of CLN2
Target Name	CLN2
Accession No.	Swiss-Prot:O14773Gene ID:1200
Uniprot	O14773
GeneID	1200;
Concentration	1mg/ml
Formulation	Supplied in 0.1M Tris-buffered saline with 10% Glycerol (pH7.0). 0.01% Thimerosal was added as a preservative.
Storage	Store at -20°C for long term preservation (recommended). Store at 4°C for short term use.

Application Details

Predicted MW: 61kd

Western blotting: 1:500-1:3000

Images



Sample (30 ug of whole cell lysate)
A: A431
7.5% SDS PAGE
CLN2 antibody diluted at 1: 1000

Background

This gene encodes a member of the sedolisin family of serine proteases. The protease functions in the lysosome to cleave N-terminal tripeptides from substrates, and has weaker endopeptidase activity. It is synthesized as a catalytically-inactive enzyme which is activated and auto-proteolyzed upon

acidification. Mutations in this gene result in late-infantile neuronal ceroid lipofuscinosis, which is associated with the failure to degrade specific neuropeptides and a subunit of ATP synthase in the lysosome. [provided by RefSeq]

Note: This product is for in vitro research use only