

## RGS2 antibody

Catalog No: #38301

Package Size: #38301-1 50ul #38301-2 100ul

Orders: [order@signalwayantibody.com](mailto:order@signalwayantibody.com)Support: [tech@signalwayantibody.com](mailto:tech@signalwayantibody.com)

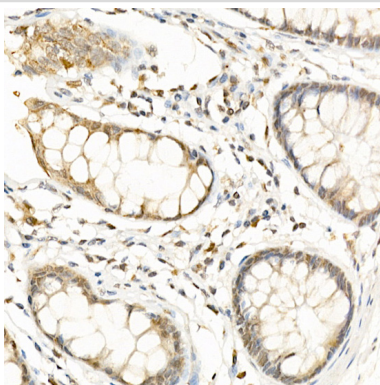
## Description

Product Name	RGS2 antibody
Host Species	Rabbit
Clonality	Polyclonal
Isotype	IgG
Purification	Affinity purification
Applications	WB,IHC
Species Reactivity	Human
Specificity	The antibody detects endogenous level of total RGS2 protein.
Immunogen Type	Recombinant Protein
Immunogen Description	Recombinant fusion protein of human RGS2 (NP_002914.1).
Target Name	RGS2
Other Names	RGS2;G0S8
Accession No.	Uniprot:P41220GeneID:5997
Uniprot	P41220
GeneID	5997
SDS-PAGE MW	Refer to figures
Concentration	1.0mg/ml
Formulation	PBS with 0.02% sodium azide,50% glycerol,pH7.3.
Storage	Store at -20°C. Avoid freeze / thaw cycles.

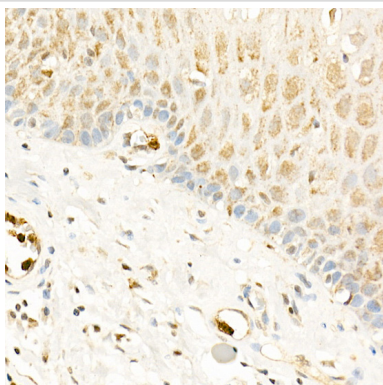
## Application Details

WB□1:500 - 1:2000IHC□1:50 - 1:200

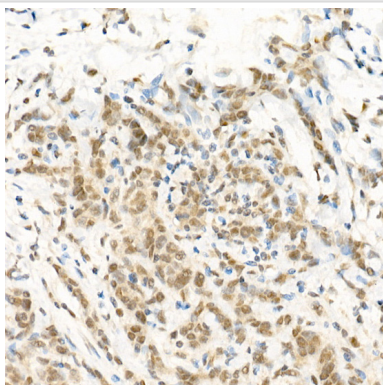
## Images



Immunohistochemistry of paraffin-embedded human colon using RGS2 Rabbit pAb.



Immunohistochemistry of paraffin-embedded human esophagus using RGS2 Rabbit pAb.



Immunohistochemistry of paraffin-embedded human breast cancer using RGS2 Rabbit pAb.

## Background

Regulator of G protein signaling (RGS) family members are regulatory molecules that act as GTPase activating proteins (GAPs) for G alpha subunits of heterotrimeric G proteins. RGS proteins are able to deactivate G protein subunits of the Gi alpha, Go alpha and Gq alpha subtypes. They drive G proteins into their inactive GDP-bound forms. Regulator of G protein signaling 2 belongs to this family. The protein acts as a mediator of myeloid differentiation and may play a role in leukemogenesis.

Note: This product is for in vitro research use only