

## CYP24A1 antibody

Catalog No: #22321

Orders: order@signalwayantibody.com

Support: tech@signalwayantibody.com

## Description

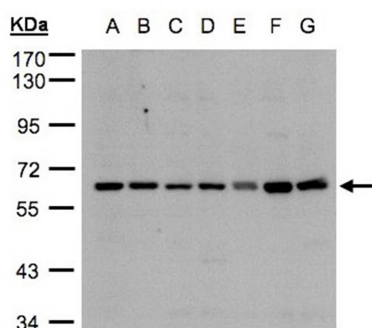
Product Name	CYP24A1 antibody
Host Species	Rabbit
Clonality	Polyclonal
Purification	Purified by antigen-affinity chromatography.
Applications	WB
Species Reactivity	Hu
Immunogen Type	Recombinant protein
Immunogen Description	Recombinant protein fragment contain a sequence corresponding to a region within amino acids 241 and 498 of Human CYP24A1
Target Name	CYP24A1
Other Names	CP24; CYP24; MGC126273; MGC126274; P450-CC24
Accession No.	Swiss-Prot:Q07973 Gene ID:1591
Uniprot	Q07973
GeneID	1591;
Concentration	1mg/ml
Formulation	Supplied in 0.1M Tris-buffered saline with 10% Glycerol (pH7.0). 0.01% Thimerosal was added as a preservative.
Storage	Store at -20°C for long term preservation (recommended). Store at 4°C for short term use.

## Application Details

Predicted MW: 59kd

Western blotting: 1:500-1:3000

## Images



Sample(30ug whole cell lysate)

A: 293T

B: A431

C: H1299

D: HeLa S3

E: Hep G2

F: MOLT4

G: Raji

7.5% SDS PAGE

Primary antibody diluted at 1: 3000

## Background

This gene encodes a member of the cytochrome P450 superfamily of enzymes. The cytochrome P450 proteins are monooxygenases which catalyze

many reactions involved in drug metabolism and synthesis of cholesterol, steroids and other lipids. This mitochondrial protein initiates the degradation of 1,25-dihydroxyvitamin D3, the physiologically active form of vitamin D3, by hydroxylation of the side chain. In regulating the level of vitamin D3, this enzyme plays a role in calcium homeostasis and the vitamin D endocrine system. Alternatively spliced transcript variants encoding different isoforms have been found for this gene. [provided by RefSeq]

---

Note: This product is for in vitro research use only