

PKLR antibody

Catalog No: #38320



Package Size: #38320-1 50ul #38320-2 100ul

Orders: [order@signalwayantibody.com](mailto:order@signalwayantibody.com)  
Support: [tech@signalwayantibody.com](mailto:tech@signalwayantibody.com)

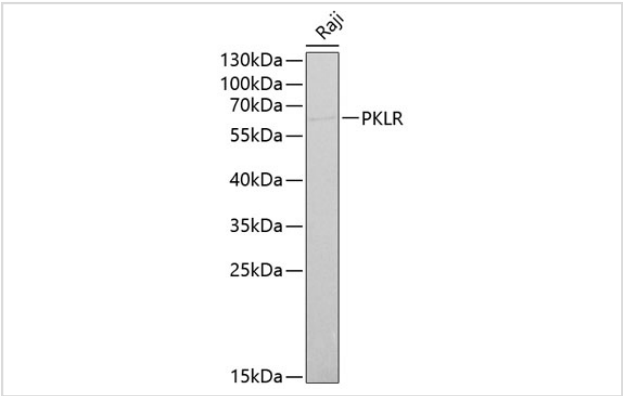
Description

Product Name	PKLR antibody
Host Species	Rabbit
Clonality	Polyclonal
Isotype	IgG
Purification	Affinity purification
Applications	WB
Species Reactivity	Human
Specificity	The antibody detects endogenous level of total PKLR protein.
Immunogen Type	Recombinant Protein
Immunogen Description	Recombinant fusion protein of human PKLR (NP_000289.1).
Target Name	PKLR
Other Names	PKLR;PK1;PKL;PKR;PKRL;RPK
Accession No.	Uniprot:P30613GeneID:5313
Uniprot	P30613
GeneID	5313
SDS-PAGE MW	62kDa
Concentration	1.0mg/ml
Formulation	PBS with 0.02% sodium azide,50% glycerol,pH7.3.
Storage	Store at -20°C. Avoid freeze / thaw cycles.

Application Details

WB 1:500 - 1:2000

Images



Western blot analysis of extracts of Raji cells, using PKLR antibody.

## Background

---

The protein encoded by this gene is a pyruvate kinase that catalyzes the transphosphorylation of phosphoenolpyruvate into pyruvate and ATP, which is the rate-limiting step of glycolysis. Defects in this enzyme, due to gene mutations or genetic variations, are the common cause of chronic hereditary nonspherocytic hemolytic anemia (CNSHA or HNSHA). Multiple transcript variants encoding different isoforms have been found for this gene.

---

Note: This product is for in vitro research use only