

CSH1 antibody

Catalog No: #38328

Package Size: #38328-1 50ul #38328-2 100ul

Orders: order@signalwayantibody.comSupport: tech@signalwayantibody.com

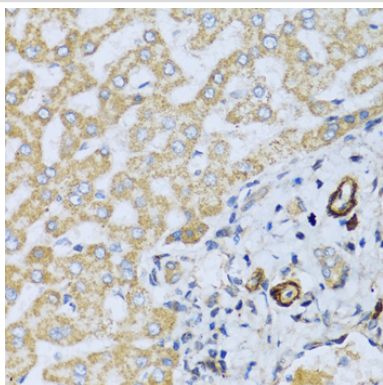
Description

Product Name	CSH1 antibody
Host Species	Rabbit
Clonality	Polyclonal
Purification	Antibodies were purified by affinity purification using immunogen.
Applications	IHC
Species Reactivity	Human
Specificity	The antibody detects endogenous level of total CSH1 protein.
Immunogen Type	Recombinant Protein
Immunogen Description	Recombinant protein of human CSH1.
Target Name	CSH1
Other Names	PL; CSA; CS-1; CSMT; hCS-1; hCS-A;
Accession No.	Swiss-Prot#: P01243NCBI Gene ID: 1442
Uniprot	P0DML2
GeneID	1442;
SDS-PAGE MW	25kd
Concentration	1.0mg/ml
Formulation	Supplied at 1.0mg/mL in phosphate buffered saline (without Mg ²⁺ and Ca ²⁺), pH 7.4, 150mM NaCl, 0.02% sodium azide and 50% glycerol.
Storage	Store at -20°C

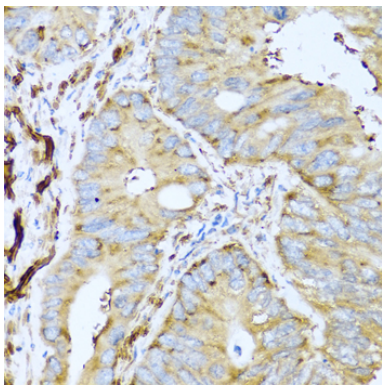
Application Details

IHC□1:50 - 1:100

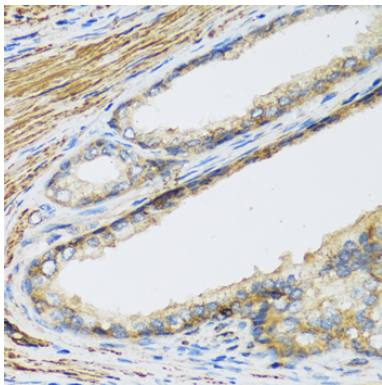
Images



Immunohistochemistry of paraffin-embedded human liver using CSH1 at dilution of 1:100 (40x lens).



Immunohistochemistry of paraffin-embedded human colon carcinoma using CSH1 at dilution of 1:100 (40x lens).



Immunohistochemistry of paraffin-embedded human prostate using CSH1 at dilution of 1:100 (40x lens).

Background

The protein encoded by this gene is a member of the somatotropin/prolactin family of hormones and plays an important role in growth control. The gene is located at the growth hormone locus on chromosome 17 along with four other related genes in the same transcriptional orientation; an arrangement which is thought to have evolved by a series of gene duplications. Although the five genes share a remarkably high degree of sequence identity, they are expressed selectively in different tissues. Alternative splicing generates additional isoforms of each of the five growth hormones, leading to further diversity and potential for specialization. This particular family member is expressed mainly in the placenta and utilizes multiple transcription initiation sites. Expression of the identical mature proteins for chorionic somatomammotropin hormones 1 and 2 is upregulated during development, although the ratio of 1 to 2 increases by term. Mutations in this gene result in placental lactogen deficiency and Silver-Russell syndrome.

Note: This product is for in vitro research use only