

CSF2RA antibody

Catalog No: #38337

Package Size: #38337-1 50ul #38337-2 100ul

Orders: order@signalwayantibody.com

Support: tech@signalwayantibody.com

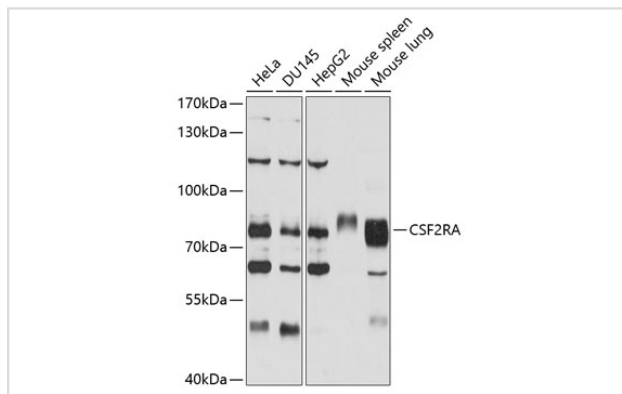
Description

Product Name	CSF2RA antibody
Host Species	Rabbit
Clonality	Polyclonal
Isotype	IgG
Purification	Affinity purification
Applications	WB
Species Reactivity	Human,Mouse
Specificity	The antibody detects endogenous level of total CSF2RA protein.
Immunogen Type	Recombinant Protein
Immunogen Description	Recombinant fusion protein of human CSF2RA (NP_758448.1).
Target Name	CSF2RA
Other Names	CSF2RA;CD116;CDw116;CSF2R;CSF2RAX;CSF2RAY;CSF2RX;CSF2RY;GM-CSF-R-alpha;GMCSFR;GMR;SMDP4
Accession No.	Uniprot:P15509GeneID:1438
Uniprot	P15509
GeneID	1438
SDS-PAGE MW	80kDa
Concentration	1.0mg/ml
Formulation	PBS with 0.02% sodium azide,50% glycerol,pH7.3.
Storage	Store at -20°C. Avoid freeze / thaw cycles.

Application Details

WB □ 1:500 - 1:2000

Images



Western blot analysis of extracts of various cell lines, using CSF2RA antibody.

Background

The protein encoded by this gene is the alpha subunit of the heterodimeric receptor for colony stimulating factor 2, a cytokine which controls the production, differentiation, and function of granulocytes and macrophages. The encoded protein is a member of the cytokine family of receptors. This gene is found in the pseudoautosomal region (PAR) of the X and Y chromosomes. Multiple transcript variants encoding different isoforms have been found for this gene, with some of the isoforms being membrane-bound and others being soluble.

Note: This product is for in vitro research use only