

ICAM2 antibody

Catalog No: #38338



Package Size: #38338-1 50ul #38338-2 100ul

Orders: order@signalwayantibody.com
Support: tech@signalwayantibody.com

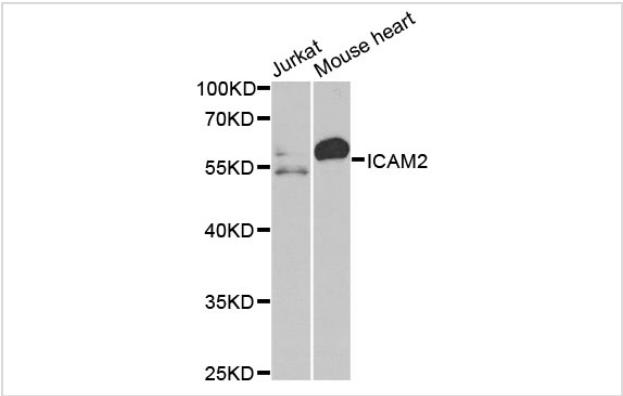
Description

| | |
|-----------------------|---|
| Product Name | ICAM2 antibody |
| Host Species | Rabbit |
| Clonality | Polyclonal |
| Purification | Antibodies were purified by affinity purification using immunogen. |
| Applications | WB |
| Species Reactivity | Human,Mouse |
| Specificity | The antibody detects endogenous level of total ICAM2 protein. |
| Immunogen Type | Recombinant Protein |
| Immunogen Description | Recombinant protein of human ICAM2. |
| Target Name | ICAM2 |
| Other Names | CD102; ICAM2; |
| Accession No. | Swiss-Prot#: P13598NCBI Gene ID: 3384 |
| Uniprot | P13598 |
| GeneID | 3384; |
| SDS-PAGE MW | 31kd |
| Concentration | 1.0mg/ml |
| Formulation | Supplied at 1.0mg/mL in phosphate buffered saline (without Mg2+ and Ca2+), pH 7.4, 150mM NaCl, 0.02% sodium azide and 50% glycerol. |
| Storage | Store at -20°C |

Application Details

WB 1:500 - 1:2000

Images



Western blot analysis of extracts of various cell lines, using ICAM2 at 1:1000 dilution.

Background

The protein encoded by this gene is a member of the intercellular adhesion molecule (ICAM) family. All ICAM proteins are type I transmembrane glycoproteins, contain 2-9 immunoglobulin-like C2-type domains, and bind to the leukocyte adhesion LFA-1 protein. This protein may play a role in lymphocyte recirculation by blocking LFA-1-dependent cell adhesion. It mediates adhesive interactions important for antigen-specific immune response, NK-cell mediated clearance, lymphocyte recirculation, and other cellular interactions important for immune response and surveillance. Several transcript variants encoding the same protein have been found for this gene. [provided by RefSeq, Jul 2008]

Note: This product is for in vitro research use only