

## REG3G antibody

Catalog No: #38382

Package Size: #38382-1 50ul #38382-2 100ul

Orders: [order@signalwayantibody.com](mailto:order@signalwayantibody.com)Support: [tech@signalwayantibody.com](mailto:tech@signalwayantibody.com)

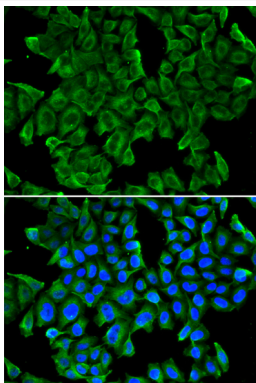
## Description

Product Name	REG3G antibody
Host Species	Rabbit
Clonality	Polyclonal
Purification	Antibodies were purified by affinity purification using immunogen.
Applications	WB,IF
Species Reactivity	Human,Mouse,Rat
Specificity	The antibody detects endogenous level of total REG3G protein.
Immunogen Type	Recombinant Protein
Immunogen Description	Recombinant protein of mouse REG3G.
Target Name	REG3G
Other Names	AI449515
Accession No.	Swiss-Prot#: O09049NCBI Gene ID: 130120
Uniprot	O09049
GeneID	19695;;
SDS-PAGE MW	19kd
Concentration	1.0mg/ml
Formulation	Supplied at 1.0mg/mL in phosphate buffered saline (without Mg <sup>2+</sup> and Ca <sup>2+</sup> ), pH 7.4, 150mM NaCl, 0.02% sodium azide and 50% glycerol.
Storage	Store at -20°C

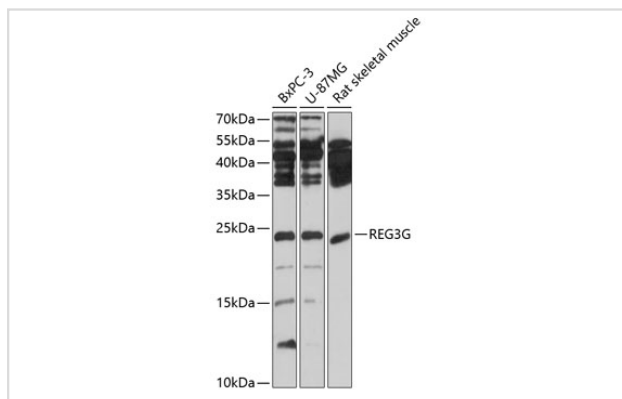
## Application Details

WB□1:500 - 1:2000IF□1:10 - 1:100

## Images



Immunofluorescence analysis of MCF-7 cells using REG3G .  
Blue: DAPI for nuclear staining.



Western blot analysis of extracts of various cell lines, using REG3G at 1:1000 dilution.

## Background

The regeneration (REG) family consists of secretory proteins involved in liver, pancreatic, gastric and intestinal cell proliferation or differentiation. Members of the REG family are divided into four subclasses, designated types I, II, III and IV, all of which share a common gene structure containing five introns and six exons. Members of the Reg family have been implicated in the regulation of cell growth, tumorigenesis and the progression of cancer. Reg III? (regenerating islet-derived 3 gamma), also known as pancreatitis-associated protein 1B, PAP1B, or UNQ429, is a 175 amino acid secreted protein that is expressed almost exclusively in pancreas, with low levels of expression in testis. Reg III? functions as an antimicrobial protein involved in controlling bacterial proliferation and may be induced during acute pancreatitis. The gene encoding Reg III? maps to human chromosome 2, which houses over 1,400 genes and comprises nearly 8% of the human genome.

Note: This product is for in vitro research use only