

TBP antibody

Catalog No: #38396



Package Size: #38396-1 50ul #38396-2 100ul

Orders: order@signalwayantibody.com
Support: tech@signalwayantibody.com

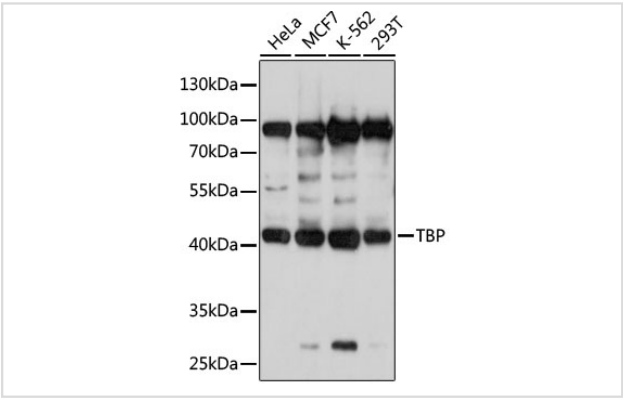
Description

Product Name	TBP antibody
Host Species	Rabbit
Clonality	Polyclonal
Purification	Antibodies were purified by affinity purification using immunogen.
Applications	WB
Species Reactivity	Human
Specificity	The antibody detects endogenous level of total TBP protein.
Immunogen Type	Recombinant Protein
Immunogen Description	Recombinant protein of human TBP.
Target Name	TBP
Other Names	TBP; GTF2D; GTF2D1; HDL4; SCA17; TFIID; TATA-box-binding protein; TATA sequence-binding protein; TATA-binding factor; TATA-box factor;
Accession No.	Swiss-Prot#: P20226NCBI Gene ID: 6908
Uniprot	P20226
GeneID	6908;
SDS-PAGE MW	38kd
Concentration	1.0mg/ml
Formulation	Supplied at 1.0mg/mL in phosphate buffered saline (without Mg2+ and Ca2+), pH 7.4, 150mM NaCl, 0.02% sodium azide and 50% glycerol.
Storage	Store at -20°C

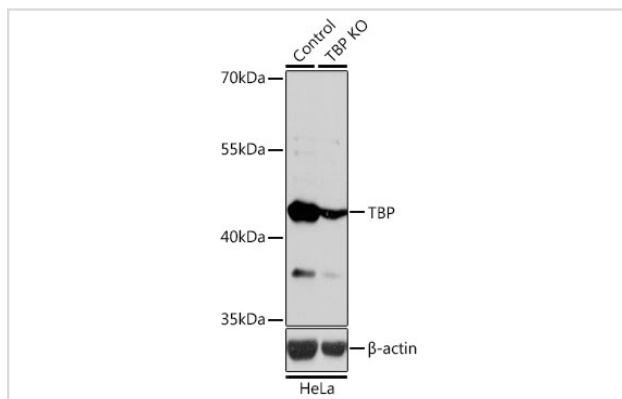
Application Details

WB 1:500 - 1:2000

Images



Western blot analysis of extracts of various cell lines, using TBP at 1:1000 dilution.



Western blot analysis of extracts from normal (control) and TBP knockout (KO) HeLa cells, using TBP at 1:1000 dilution.

Background

The TATA binding protein (TBP) is a transcription factor that binds specifically to a DNA sequence TATA box. This DNA sequence is found about 25-30 base pairs upstream of the transcription start site in some eukaryotic gene promoters. TBP, along with a variety of TBP-associated factors, make up the TFIID, a general transcription factor that in turn makes up part of the RNA polymerase II preinitiation complex. As one of the few proteins in the preinitiation complex that binds DNA in a sequence-specific manner, it helps position RNA polymerase II over the transcription start site of the gene. However, it is estimated that only 10-20% of human promoters have TATA boxes. Therefore, TBP is probably not the only protein involved in positioning RNA polymerase II. This protein is not suitable for samples where the nuclear envelope has been removed.

Note: This product is for in vitro research use only