

CAP1 antibody

Catalog No: #22330



Orders: order@signalwayantibody.com
Support: tech@signalwayantibody.com

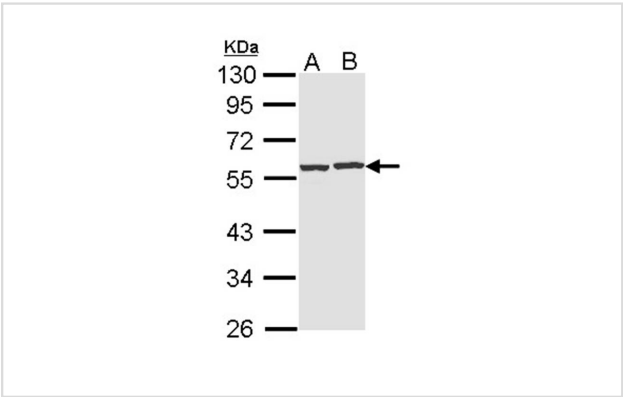
Description

Product Name	CAP1 antibody
Host Species	Rabbit
Clonality	Polyclonal
Purification	Purified by antigen-affinity chromatography.
Applications	WB IHC
Species Reactivity	Hu
Immunogen Type	Recombinant protein
Immunogen Description	Recombinant protein fragment contain a sequence corresponding to a region within amino acids 266 and 462 of CAP1
Target Name	CAP1
Accession No.	Swiss-Prot:Q01518Gene ID:10487
Uniprot	Q01518
GeneID	10487;
Concentration	0.9mg/ml
Formulation	Supplied in 0.1M Tris-buffered saline with 10% Glycerol (pH7.0). 0.01% Thimerosal was added as a preservative.
Storage	Store at -20°C for long term preservation (recommended). Store at 4°C for short term use.

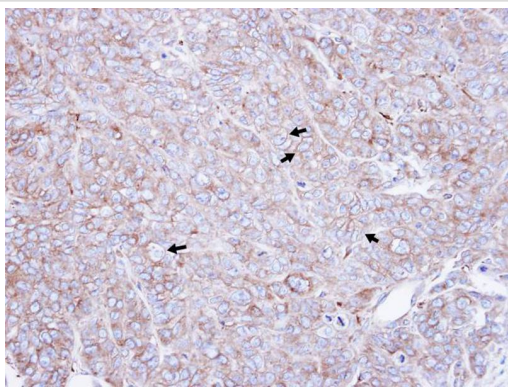
Application Details

Predicted MW: 52kd
Western blotting: 1:500-1:3000
Immunohistochemistry: 1:100-1:500

Images



Sample (30 ug of whole cell lysate)
A: Hep G2
B: Raji
10% SDS PAGE
Primary antibody diluted at 1: 1000



Immunohistochemical analysis of paraffin-embedded DLD1 xenograft, using CAP1 antibody at 1: 500 dilution.

Background

The protein encoded by this gene is related to the *S. cerevisiae* CAP protein, which is involved in the cyclic AMP pathway. The human protein is able to interact with other molecules of the same protein, as well as with CAP2 and actin. Alternatively spliced transcript variants have been identified.
[provided by RefSeq]

Note: This product is for in vitro research use only