

Cytokine receptor-like factor 1 antibody

Catalog No: #22333

Orders: order@signalwayantibody.comSupport: tech@signalwayantibody.com

Description

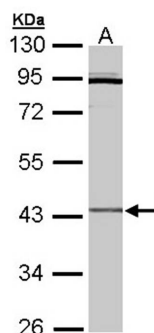
| | |
|-----------------------|---|
| Product Name | Cytokine receptor-like factor 1 antibody |
| Host Species | Rabbit |
| Clonality | Polyclonal |
| Purification | Purified by antigen-affinity chromatography. |
| Applications | WB |
| Species Reactivity | Hu |
| Immunogen Type | Recombinant protein |
| Immunogen Description | Recombinant protein fragment contain a sequence corresponding to a region within amino acids 130 and 385 of Human CRLF1 |
| Target Name | Cytokine receptor-like factor 1 |
| Accession No. | Swiss-Prot:O75462Gene ID:9244 |
| Uniprot | O75462 |
| GeneID | 9244; |
| Concentration | 1mg/ml |
| Formulation | Supplied in 0.1M Tris-buffered saline with 10% Glycerol (pH7.0). 0.01% Thimerosal was added as a preservative. |
| Storage | Store at -20°C for long term preservation (recommended). Store at 4°C for short term use. |

Application Details

Predicted MW: 46kd

Western blotting: 1:500-1:3000

Images



Sample (30 ug of whole cell lysate)
A: Hep G2
10% SDS PAGE
Primary antibody diluted at 1: 3000

Note: This product is for in vitro research use only