

CA4 antibody

Catalog No: #38437



Package Size: #38437-1 50ul #38437-2 100ul

Orders: [order@signalwayantibody.com](mailto:order@signalwayantibody.com)  
Support: [tech@signalwayantibody.com](mailto:tech@signalwayantibody.com)

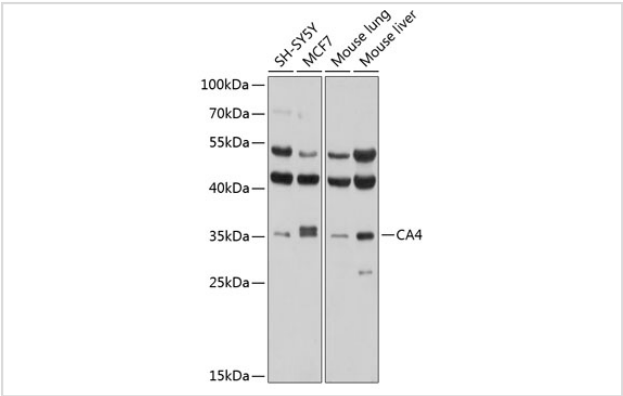
Description

|                       |   |
|-----------------------|---|
| Product Name          | CA4 antibody  |
| Host Species          | Rabbit  |
| Clonality             | Polyclonal  |
| Purification          | Antibodies were purified by affinity purification using immunogen.  |
| Applications          | WB  |
| Species Reactivity    | Human,Mouse   |
| Specificity           | The antibody detects endogenous level of total CA4 protein.   |
| Immunogen Type        | Recombinant Protein   |
| Immunogen Description | Recombinant protein of human CA4.   |
| Target Name           | CA4   |
| Other Names           | CAIV; Car4; RP17;   |
| Accession No.         | Swiss-Prot#: P22748NCBI Gene ID: 762  |
| Uniprot               | P22748  |
| GeneID                | 762;  |
| SDS-PAGE MW           | 35kd  |
| Concentration         | 1.0mg/ml  |
| Formulation           | Supplied at 1.0mg/mL in phosphate buffered saline (without Mg2+ and Ca2+), pH 7.4, 150mM NaCl, 0.02% sodium azide and 50% glycerol. |
| Storage               | Store at -20°C  |

Application Details

WB 1:500 - 1:2000

Images



Western blot analysis of extracts of various cell lines, using CA4 at 1:1000 dilution.

## Background

Carbonic anhydrases (CAs) are a large family of zinc metalloenzymes that catalyze the reversible hydration of carbon dioxide. They participate in a variety of biological processes, including respiration, calcification, acid-base balance, bone resorption, and the formation of aqueous humor, cerebrospinal fluid, saliva, and gastric acid. They show extensive diversity in tissue distribution and in their subcellular localization. This gene encodes a glycosylphosphatidyl-inositol-anchored membrane isozyme expressed on the luminal surfaces of pulmonary (and certain other) capillaries and proximal renal tubules. Its exact function is not known; however, it may have a role in inherited renal abnormalities of bicarbonate transport. [provided by RefSeq, Jul 2008]

Note: This product is for in vitro research use only