

CDK20 antibody

Catalog No: #38440

Package Size: #38440-1 50ul #38440-2 100ul

Orders: order@signalwayantibody.comSupport: tech@signalwayantibody.com

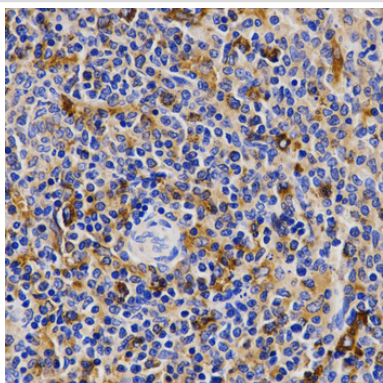
Description

Product Name	CDK20 antibody
Host Species	Rabbit
Clonality	Polyclonal
Purification	Antibodies were purified by affinity purification using immunogen.
Applications	IHC
Species Reactivity	Rat
Specificity	The antibody detects endogenous level of total CDK20 protein.
Immunogen Type	Recombinant Protein
Immunogen Description	Recombinant protein of human CDK20.
Target Name	CDK20
Other Names	P42; CCRK; CDCH; PNQALRE;
Accession No.	Swiss-Prot#: Q8IZL9NCBI Gene ID: 23552
Uniprot	Q8IZL9
GeneID	23552;
SDS-PAGE MW	31kd
Concentration	1.0mg/ml
Formulation	Supplied at 1.0mg/mL in phosphate buffered saline (without Mg ²⁺ and Ca ²⁺), pH 7.4, 150mM NaCl, 0.02% sodium azide and 50% glycerol.
Storage	Store at -20°C

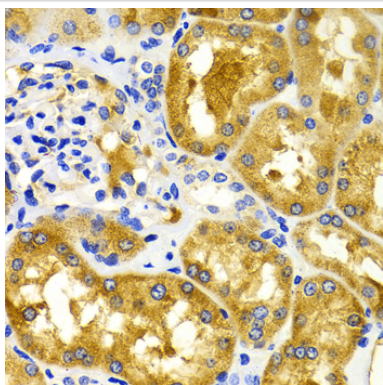
Application Details

IHC□1:50 - 1:100

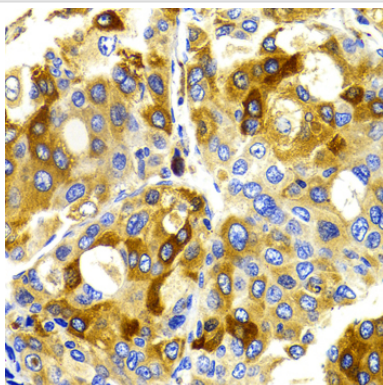
Images



Immunohistochemistry of paraffin-embedded rat spleen using CDK20 at dilution of 1:200 (40x lens).



Immunohistochemistry of paraffin-embedded human kidney using CDK20 at dilution of 1:100 (40x lens).



Immunohistochemistry of paraffin-embedded human liver cancer using CDK20 at dilution of 1:100 (40x lens).

Background

The protein encoded by this gene contains a kinase domain most closely related to the cyclin-dependent protein kinases. The encoded kinase may activate cyclin-dependent kinase 2 and is involved in cell growth. Alternatively spliced transcript variants encoding distinct isoforms have been reported.

Note: This product is for in vitro research use only