

IL18R1 antibody

Catalog No: #38443

Package Size: #38443-1 50ul #38443-2 100ul

Orders: order@signalwayantibody.comSupport: tech@signalwayantibody.com

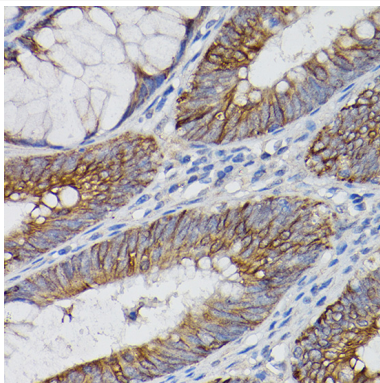
Description

Product Name	IL18R1 antibody
Host Species	Rabbit
Clonality	Polyclonal
Isotype	IgG
Purification	Affinity purification
Applications	WB,IHC,IF
Species Reactivity	Human,Mouse,Rat
Specificity	The antibody detects endogenous level of total IL18R1 protein.
Immunogen Type	Recombinant Protein
Immunogen Description	Recombinant fusion protein of human IL18R1 (NP_003846.1).
Target Name	IL18R1
Other Names	IL18R1;CD218a;CDw218a;IL-1Rrp;IL18RA;IL1RRP
Accession No.	Uniprot:Q13478GeneID:8809
Uniprot	Q13478
GeneID	8809
SDS-PAGE MW	75kDa
Concentration	1.0mg/ml
Formulation	PBS with 0.02% sodium azide,50% glycerol,pH7.3.
Storage	Store at -20°C. Avoid freeze / thaw cycles.

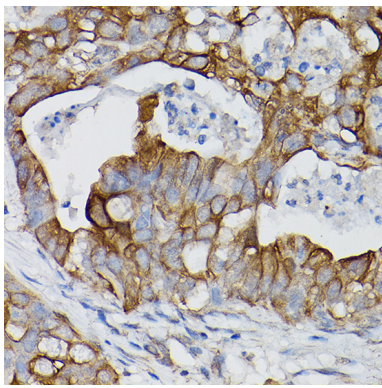
Application Details

WB□1:500 - 1:1000IHC□1:50 - 1:200IF□1:50 - 1:200

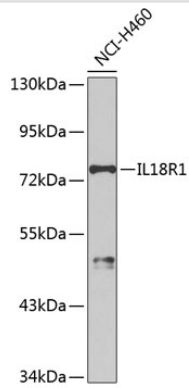
Images



Immunohistochemistry of paraffin-embedded human colon carcinoma using IL18R1 Rabbit pAb.



Immunohistochemistry of paraffin-embedded human lung cancer using IL18R1 Rabbit pAb.



Western blot analysis of extracts of NCI-H460 cells, using IL18R1 antibody.

Background

The protein encoded by this gene is a cytokine receptor that belongs to the interleukin 1 receptor family. This receptor specifically binds interleukin 18 (IL18), and is essential for IL18 mediated signal transduction. IFN- α and IL12 are reported to induce the expression of this receptor in NK and T cells. This gene along with four other members of the interleukin 1 receptor family, including IL1R2, IL1R1, ILRL2 (IL-1Rp2), and IL1RL1 (T1/ST2), form a gene cluster on chromosome 2q. Alternatively spliced transcript variants encoding different isoforms have been found for this gene.

Note: This product is for in vitro research use only