

DEDD antibody

Catalog No: #22334

Orders: order@signalwayantibody.com

Support: tech@signalwayantibody.com

Description

Product Name	DEDD antibody
Host Species	Rabbit
Clonality	Polyclonal
Purification	Purified by antigen-affinity chromatography.
Applications	WB IF
Species Reactivity	Hu
Immunogen Type	Peptide
Immunogen Description	Synthetic peptide contain a sequence corresponding to a region within amino acids 129 and 193 of human DEDD
Target Name	DEDD
Accession No.	Swiss-Prot:O75618Gene ID:9191
Uniprot	O75618
GeneID	9191;
Concentration	0.4mg/ml
Formulation	Supplied in 0.1M Tris-buffered saline with 10% Glycerol (pH7.0). 0.01% Thimerosal was added as a preservative.
Storage	Store at -20°C for long term preservation (recommended). Store at 4°C for short term use.

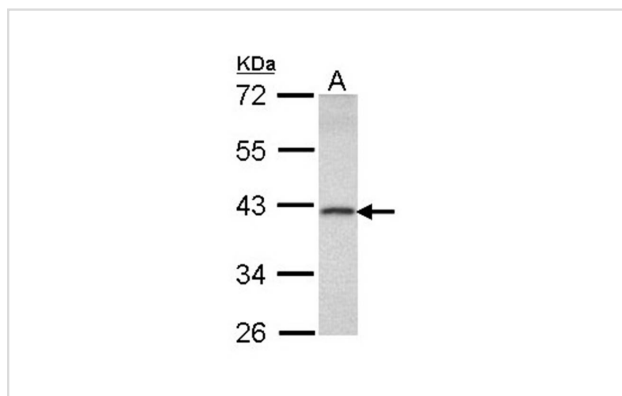
Application Details

Predicted MW: 37kd

Western blotting: 1:500-1:3000

Immunofluorescence: 1:100-1:200

Images

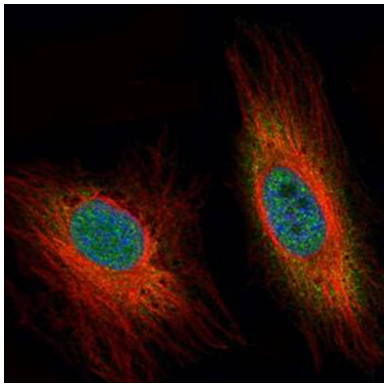


Sample (30 ug of whole cell lysate)

A: Raji

10% SDS PAGE

Primary antibody diluted at 1: 1000



Confocal immunofluorescence analysis (Olympus FV10i) of paraformaldehyde-fixed HeLa, using DEDD antibody (Green) at 1: 500 dilution and alpha-tubulin antibody (Red) at 1: 2500.

Background

This gene encodes a protein that contains a death effector domain (DED). DED is a protein-protein interaction domain shared by adaptors, regulators and executors of the programmed cell death pathway. Overexpression of this gene was shown to induce weak apoptosis. Upon stimulation, this protein was found to translocate from cytoplasm to nucleus and colocalize with UBTF, a basal factor required for RNA polymerase I transcription, in the nucleolus. At least three transcript variants encoding the same protein have been found for this gene. [provided by RefSeq]

Note: This product is for in vitro research use only