

## CTGF antibody

Catalog No: #38476

Package Size: #38476-1 50ul #38476-2 100ul

Orders: [order@signalwayantibody.com](mailto:order@signalwayantibody.com)Support: [tech@signalwayantibody.com](mailto:tech@signalwayantibody.com)

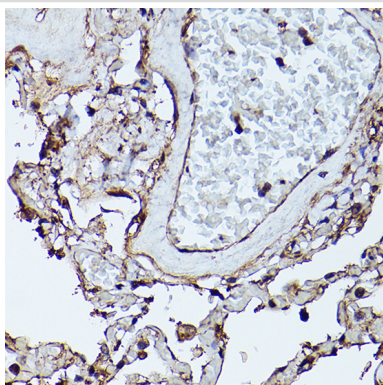
## Description

Product Name	CTGF antibody
Host Species	Rabbit
Clonality	Polyclonal
Isotype	IgG
Purification	Affinity purification
Applications	WB,IHC,IF
Species Reactivity	Human,Mouse,Rat
Specificity	The antibody detects endogenous level of total CTGF protein.
Immunogen Type	Peptide
Immunogen Description	Recombinant fusion protein of human CTGF (NP_001892.1).
Target Name	CTGF
Other Names	CTGF;CCN2;HCS24;IGFBP8;NOV2
Accession No.	Uniprot:P29279GeneID:1490
Uniprot	P29279
GeneID	1490
SDS-PAGE MW	35KDa
Concentration	1.0mg/ml
Formulation	PBS with 0.02% sodium azide,50% glycerol,pH7.3.
Storage	Store at -20°C. Avoid freeze / thaw cycles.

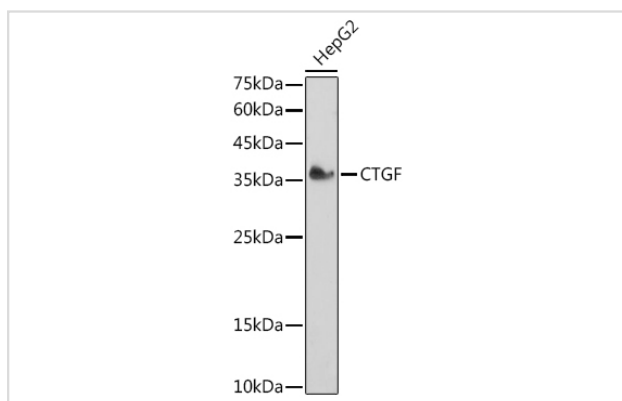
## Application Details

WB □ 1:500 - 1:2000 IHC □ 1:50 - 1:200 IF □ 1:20 - 1:50

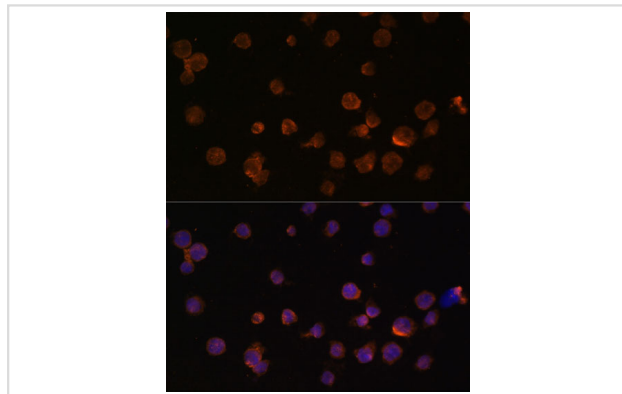
## Images



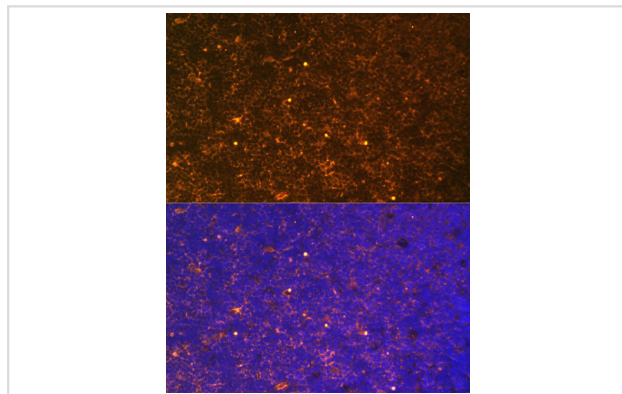
Immunohistochemistry of paraffin-embedded human lung using CTGF Rabbit pAb.



Western blot analysis of extracts of HepG2 cells, using CTGF antibody.



Immunofluorescence analysis of THP-1 cells using CTGF antibody.



Immunofluorescence analysis of rat thymus using CTGF antibody.

## Background

The protein encoded by this gene is a mitogen that is secreted by vascular endothelial cells. The encoded protein plays a role in chondrocyte proliferation and differentiation, cell adhesion in many cell types, and is related to platelet-derived growth factor. Certain polymorphisms in this gene have been linked with a higher incidence of systemic sclerosis.

**Note:** This product is for in vitro research use only