

DRD4 antibody

Catalog No: #38483

Package Size: #38483-1 50ul #38483-2 100ul

Orders: order@signalwayantibody.comSupport: tech@signalwayantibody.com

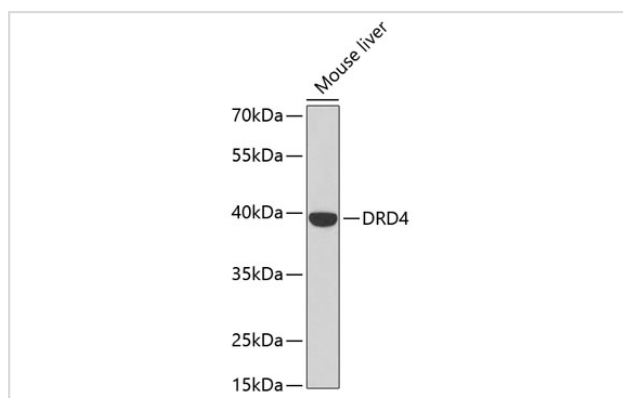
Description

Product Name	DRD4 antibody
Host Species	Rabbit
Clonality	Polyclonal
Isotype	IgG
Purification	Affinity purification
Applications	WB
Species Reactivity	Mouse
Specificity	The antibody detects endogenous level of total DRD4 protein.
Immunogen Type	Peptide
Immunogen Description	A synthetic peptide of human DRD4
Target Name	DRD4
Other Names	DRD4;D4DR
Accession No.	Uniprot:P21917GeneID:1815
Uniprot	P21917
GeneID	1815
SDS-PAGE MW	38kDa
Concentration	1.0mg/ml
Formulation	PBS with 0.02% sodium azide,50% glycerol,pH7.3.
Storage	Store at -20°C. Avoid freeze / thaw cycles.

Application Details

WB 1:500 - 1:1000

Images



Western blot analysis of extracts of mouse liver, using DRD4 antibody.

Background

This gene encodes the D4 subtype of the dopamine receptor. The D4 subtype is a G-protein coupled receptor which inhibits adenylyl cyclase. It is a target for drugs which treat schizophrenia and Parkinson disease. Mutations in this gene have been associated with various behavioral phenotypes, including autonomic nervous system dysfunction, attention deficit/hyperactivity disorder, and the personality trait of novelty seeking. This gene contains a polymorphic number (2-10 copies) of tandem 48 nt repeats; the sequence shown contains four repeats.

Note: This product is for in vitro research use only