

GYG2 antibody

Catalog No: #22338

Orders: order@signalwayantibody.comSupport: tech@signalwayantibody.com

Description

Product Name	GYG2 antibody
Host Species	Rabbit
Clonality	Polyclonal
Purification	Purified by antigen-affinity chromatography.
Applications	WB IHC
Species Reactivity	Hu
Immunogen Type	Recombinant protein
Immunogen Description	Recombinant protein fragment contain a sequence corresponding to a region within amino acids 1 and 154 of GYG2
Target Name	GYG2
Accession No.	Swiss-Prot:O15488Gene ID:8908
Uniprot	O15488
GeneID	8908;
Concentration	1mg/ml
Formulation	Supplied in 0.1M Tris-buffered saline with 20% Glycerol (pH7.0). 0.01% Thimerosal was added as a preservative.
Storage	Store at -20°C for long term preservation (recommended). Store at 4°C for short term use.

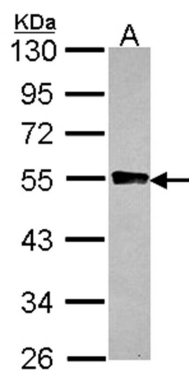
Application Details

Predicted MW: 52kd

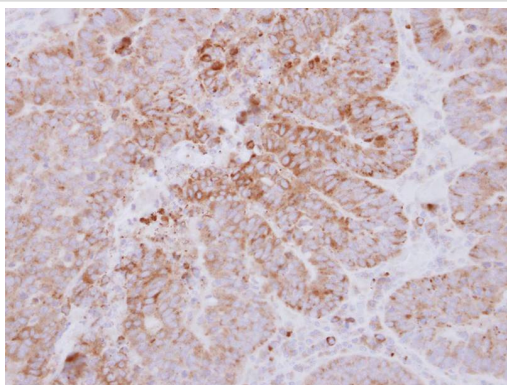
Western blotting: 1:500-1:3000

Immunohistochemistry: 1:100-1:500

Images



Sample (30 ug of whole cell lysate)
A: 293T
10% SDS PAGE
Primary antibody diluted at 1: 1000



Immunohistochemical analysis of paraffin-embedded Colon ca, using GYG2 antibody at 1: 500 dilution.

Background

This gene encodes a member of the the glycogenin family. Glycogenin is a self-glucosylating protein involved in the initiation reactions of glycogen biosynthesis. A gene on chromosome 3 encodes the muscle glycogenin and this X-linked gene encodes the glycogenin mainly present in liver; both are involved in blood glucose homeostasis. This gene has a short version on chromosome Y, which is 3' truncated and can not make a functional protein. Multiple alternatively spliced transcript variants encoding different isoforms have been identified.

Note: This product is for in vitro research use only