

Aladin antibody

Catalog No: #22340

Orders: order@signalwayantibody.comSupport: tech@signalwayantibody.com

Description

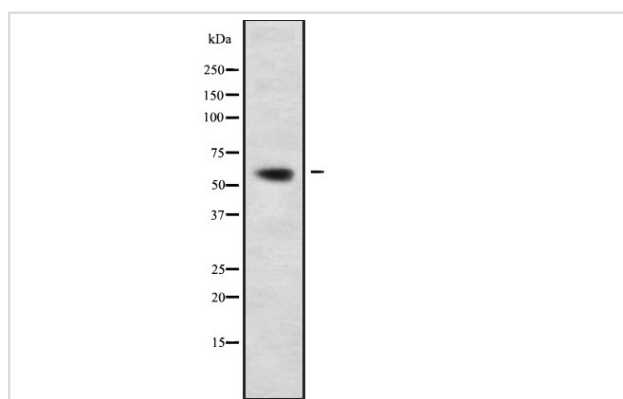
Product Name	Aladin antibody
Host Species	Rabbit
Clonality	Polyclonal
Purification	Purified by antigen-affinity chromatography.
Applications	WB
Species Reactivity	Hu
Immunogen Description	A synthesized peptide derived from human Aladin
Target Name	Aladin
Accession No.	NCBI Gene ID: 8086NCBI mRNA#: NM_015665NCBI Protein#: NP_056480
Uniprot	Q9NRG9
GeneID	8086;
Formulation	Rabbit IgG in phosphate buffered saline , pH 7.4, 150mM NaCl, 0.02% sodium azide and 50% glycerol.
Storage	Store at -20°C for long term preservation (recommended). Store at 4°C for short term use.

Application Details

Predicted MW: 60kd

Western blotting: 1:500-1:3000

Images



Western blot analysis Aladin using Jurkat whole cell lysates

Background

The protein encoded by this gene is a member of the WD-repeat family of regulatory proteins and may be involved in normal development of the peripheral and central nervous system. The encoded protein is part of the nuclear pore complex and is anchored there by NDC1. Defects in this gene are a cause of achalasia-addisonianism-alacrima syndrome (AAAS), also called triple-A syndrome or Allgrove syndrome. Two transcript variants encoding different isoforms have been found for this gene. [provided by RefSeq]

Note: This product is for in vitro research use only