

GRK1 antibody

Catalog No: #38512

Package Size: #38512-1 50ul #38512-2 100ul

Orders: order@signalwayantibody.com

Support: tech@signalwayantibody.com

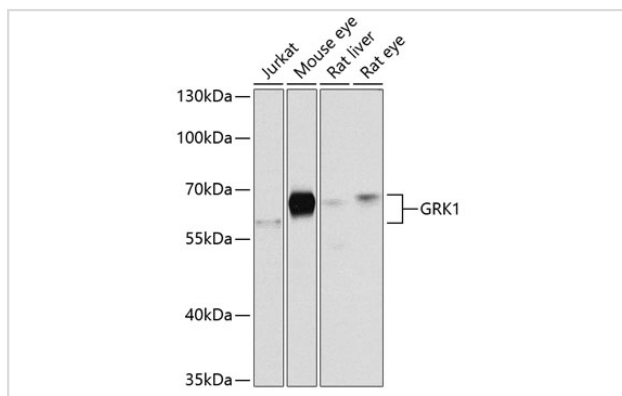
Description

| | |
|-----------------------|--|
| Product Name | GRK1 antibody |
| Host Species | Rabbit |
| Clonality | Polyclonal |
| Purification | Antibodies were purified by affinity purification using immunogen. |
| Applications | WB,IHC |
| Species Reactivity | Human,Mouse,Rat |
| Specificity | The antibody detects endogenous level of total GRK1 protein. |
| Immunogen Type | Peptide |
| Immunogen Description | A synthetic peptide of human GRK1. |
| Target Name | GRK1 |
| Other Names | RK; RHOK; GPRK1 |
| Accession No. | Swiss-Prot#: Q15835 NCBI Gene ID: 6011 |
| Uniprot | Q15835 |
| GeneID | 6011; |
| SDS-PAGE MW | 63.5kd |
| Concentration | 1.0mg/ml |
| Formulation | Supplied at 1.0mg/mL in phosphate buffered saline (without Mg ²⁺ and Ca ²⁺), pH 7.4, 150mM NaCl, 0.02% sodium azide and 50% glycerol. |
| Storage | Store at -20°C |

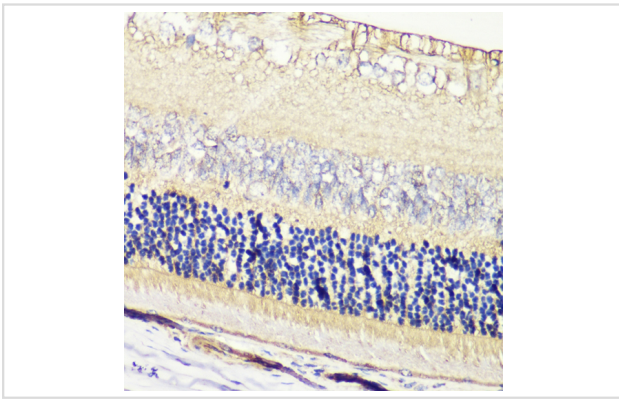
Application Details

WB □ 1:500 - 1:2000 IHC □ 1:50 - 1:200

Images



Western blot analysis of extracts of various cell lines, using GRK1 at 1:1000 dilution.



Immunohistochemistry of paraffin-embedded rat retina using GRK1 at dilution of 1:200 (40x lens).

Background

This gene encodes a member of the guanine nucleotide-binding protein (G protein)-coupled receptor kinase subfamily of the Ser/Thr protein kinase family. The protein phosphorylates rhodopsin and initiates its deactivation. Defects in GRK1 are known to cause Oguchi disease 2 (also known as stationary night blindness Oguchi type-2). Retina-specific kinase involved in the signal turnoff via phosphorylation of rhodopsin (RHO), the G protein-coupled receptor that initiates the phototransduction cascade. This rapid desensitization is essential for scotopic vision and permits rapid adaptation to changes in illumination.

Note: This product is for in vitro research use only