

IGFBP7 antibody

Catalog No: #38522



Package Size: #38522-1 50ul #38522-2 100ul

Orders: order@signalwayantibody.com
Support: tech@signalwayantibody.com

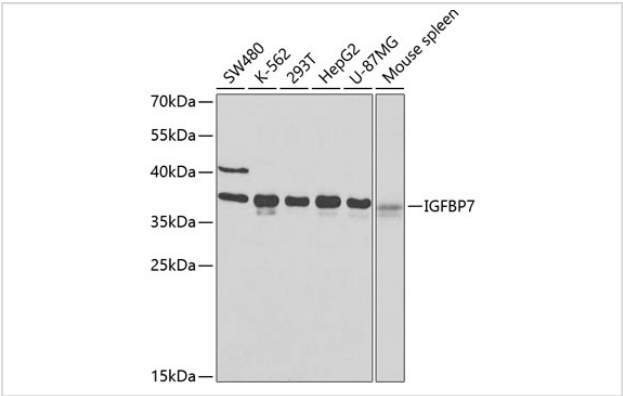
Description

Product Name	IGFBP7 antibody
Host Species	Rabbit
Clonality	Polyclonal
Purification	Antibodies were purified by affinity purification using immunogen.
Applications	WB
Species Reactivity	Human,Mouse,Rat
Specificity	The antibody detects endogenous level of total IGFBP7 protein.
Immunogen Type	Peptide
Immunogen Description	A synthetic peptide of human IGFBP7.
Target Name	IGFBP7
Other Names	AGM; PSF; TAF; FSTL2; IBP-7; MAC25; IGFBP-7; RAMSVPS; IGFBP-7v; IGFBPRP1
Accession No.	Swiss-Prot#: Q16270NCBI Gene ID: 3490
Uniprot	Q16270
GeneID	3490;
SDS-PAGE MW	29kd
Concentration	1.0mg/ml
Formulation	Supplied at 1.0mg/mL in phosphate buffered saline (without Mg2+ and Ca2+), pH 7.4, 150mM NaCl, 0.02% sodium azide and 50% glycerol.
Storage	Store at -20°C

Application Details

WB 1:500 - 1:2000

Images



Western blot analysis of extracts of various cell lines, using IGFBP7 at 1:400 dilution. Secondary antibody: HRP Goat Anti-Rabbit IgG (H+L) at 1:10000 dilution. Lysates/proteins: 25ug per lane. Blocking buffer: 3% nonfat dry milk in TBST. Detection: ECL Enhanced Kit (RM00021). Exposure time: 30s.

Background

This gene encodes a member of the insulin-like growth factor (IGF)-binding protein (IGFBP) family. IGFBPs bind IGFs with high affinity, and regulate IGF availability in body fluids and tissues and modulate IGF binding to its receptors. This protein binds IGF-I and IGF-II with relatively low affinity, and belongs to a subfamily of low-affinity IGFBPs. It also stimulates prostacyclin production and cell adhesion. Alternatively spliced transcript variants encoding different isoforms have been described for this gene, and one variant has been associated with retinal arterial macroaneurysm.

Note: This product is for in vitro research use only