

MC5R antibody

Catalog No: #38536



Package Size: #38536-1 50ul #38536-2 100ul

Orders: [order@signalwayantibody.com](mailto:order@signalwayantibody.com)  
Support: [tech@signalwayantibody.com](mailto:tech@signalwayantibody.com)

Description

|                       |   |
|-----------------------|---|
| Product Name          | MC5R antibody   |
| Host Species          | Rabbit  |
| Clonality             | Polyclonal  |
| Purification          | The antibody was affinity-purified from rabbit antiserum by affinity-chromatography using epitope-specific immunogen. |
| Applications          | WB,IHC,IF   |
| Species Reactivity    | Human,Mouse,Rat   |
| Specificity           | The antibody detects endogenous level of total MC5R protein.  |
| Immunogen Type        | Peptide   |
| Immunogen Description | A synthetic peptide of human MC5R.  |
| Target Name           | MC5R  |
| Other Names           | MC2;  |
| Accession No.         | Swiss-Prot#: P33032NCBI Gene ID: 4161   |
| Uniprot               | P33032  |
| GeneID                | 4161;   |
| Calculated MW         | 40kD  |
| SDS-PAGE MW           | 37kd  |
| Concentration         | 1.0mg/ml  |
| Formulation           | Liquid in PBS containing 50% glycerol, 0.5% BSA and 0.02% sodium azide.   |
| Storage               | Store at -20°C  |

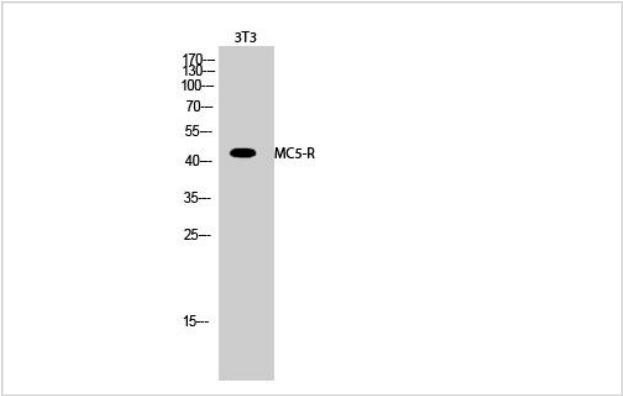
Application Details

WB□1:500 - 1:2000

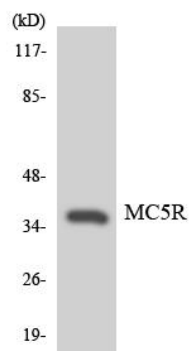
IHC□1:50 - 1:200

IF□1:50 - 1:200

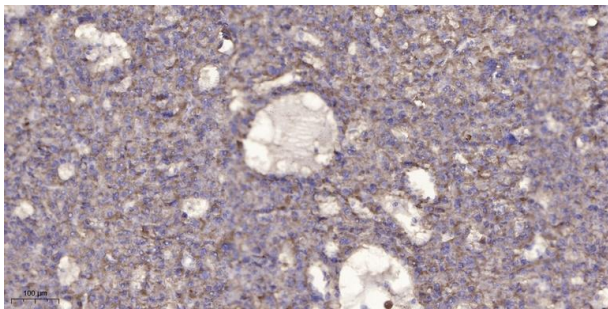
Images



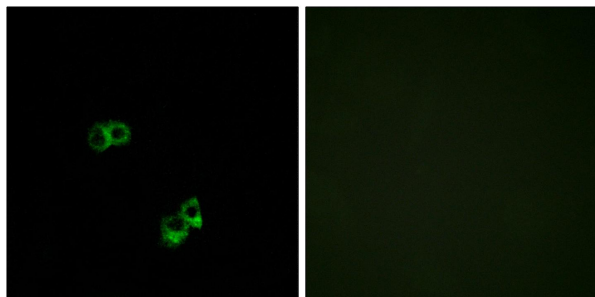
Western Blot analysis of 3T3 cells using MC5-R Polyclonal Antibody



Western blot analysis of the lysates from HeLa cells using MC5R antibody.



Immunohistochemical analysis of paraffin-embedded human liver cancer. 1, Antibody was diluted at 1:200(4° overnight). 2, Tris-EDTA,pH9.0 was used for antigen retrieval. 3,Secondary antibody was diluted at 1:200(room temperature, 45min).



Immunofluorescence analysis of MCF7 cells, using MC5R Antibody. The picture on the right is blocked with the synthesized peptide.

## Background

This gene encodes a member of the seven-pass transmembrane G protein-coupled melanocortin receptor protein family that stimulate cAMP signal transduction. The encoded protein is a receptor for melanocyte-stimulating hormone and adrenocorticotrophic hormone and is suggested to play a role in sebum generation. [provided by RefSeq, Jun 2010],

Note: This product is for in vitro research use only