

PARD6A antibody

Catalog No: #38559



Package Size: #38559-1 50ul #38559-2 100ul

Orders: order@signalwayantibody.com
Support: tech@signalwayantibody.com

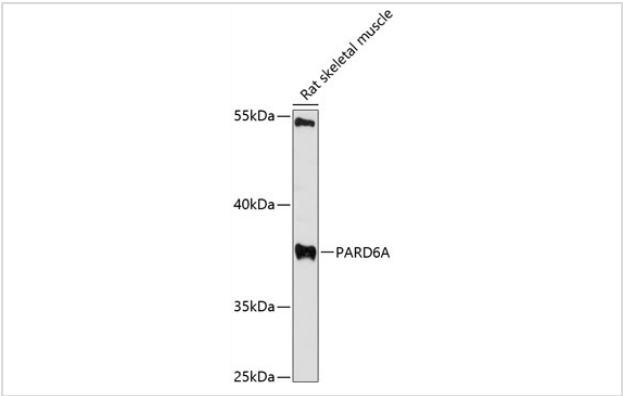
Description

Product Name	PARD6A antibody
Host Species	Rabbit
Clonality	Polyclonal
Purification	Antibodies were purified by affinity purification using immunogen.
Applications	WB
Species Reactivity	Rat
Specificity	The antibody detects endogenous level of total PARD6A protein.
Immunogen Type	Peptide
Immunogen Description	A synthetic peptide of human PRKC.
Target Name	PARD6A
Other Names	PAR6;PAR6C;TAX40;PAR-6A;TIP-40;PAR6alpha;
Accession No.	Swiss-Prot#: Q9NPB6NCBI Gene ID: 50855
Uniprot	Q9NPB6
GeneID	50855;
SDS-PAGE MW	37kd
Concentration	1.0mg/ml
Formulation	Supplied at 1.0mg/mL in phosphate buffered saline (without Mg2+ and Ca2+), pH 7.4, 150mM NaCl, 0.02% sodium azide and 50% glycerol.
Storage	Store at -20°C

Application Details

WB 1:500 - 1:2000

Images



Western blot analysis of extracts of rat skeletal muscle, using PARD6A at 1:3000 dilution.

Background

This gene is a member of the PAR6 family and encodes a protein with a PSD95/Discs-large/ZO1 (PDZ) domain and a semi-Cdc42/Rac interactive binding (CRIB) domain. This cell membrane protein is involved in asymmetrical cell division and cell polarization processes as a member of a multi-protein complex. The protein also has a role in the epithelial-to-mesenchymal transition (EMT) that characterizes the invasive phenotype associated with metastatic carcinomas. Alternate transcriptional splice variants, encoding different isoforms, have been characterized.

Note: This product is for in vitro research use only