

TPM2 antibody

Catalog No: #38576



Package Size: #38576-1 50ul #38576-2 100ul

Orders: order@signalwayantibody.com
Support: tech@signalwayantibody.com

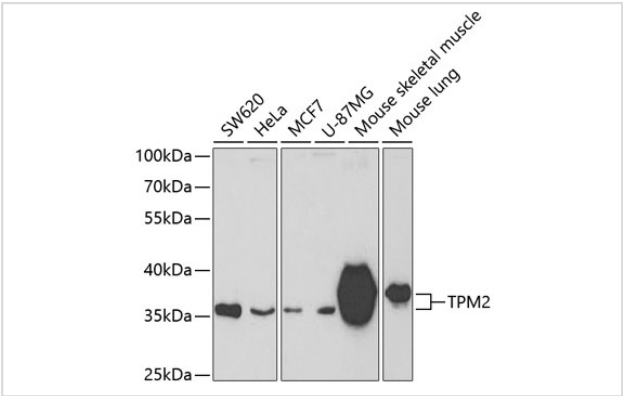
Description

Product Name	TPM2 antibody
Host Species	Rabbit
Clonality	Polyclonal
Purification	Antibodies were purified by affinity purification using immunogen.
Applications	WB,IHC,IF
Species Reactivity	Human,Mouse,Rat
Specificity	The antibody detects endogenous level of total TPM2 protein.
Immunogen Type	Peptide
Immunogen Description	A synthetic peptide of human TPM2.
Target Name	TPM2
Other Names	DA1; DA2B; NEM4; TMSB; AMCD1;
Accession No.	Swiss-Prot#: P07951NCBI Gene ID: 7169
Uniprot	P07951
GeneID	7169;
SDS-PAGE MW	33kd
Concentration	1.0mg/ml
Formulation	Supplied at 1.0mg/mL in phosphate buffered saline (without Mg2+ and Ca2+), pH 7.4, 150mM NaCl, 0.02% sodium azide and 50% glycerol.
Storage	Store at -20°C

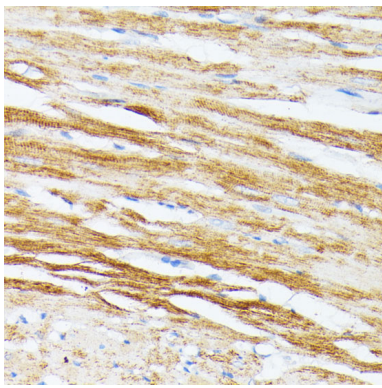
Application Details

WB 1:500 - 1:1000IHC 1:50 - 1:100IF 1:50 - 1:100

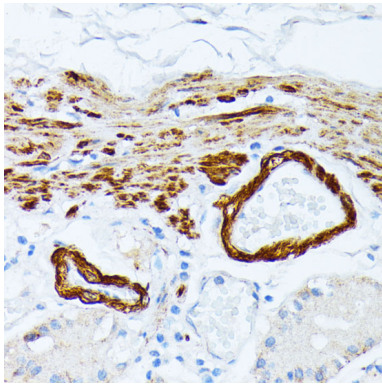
Images



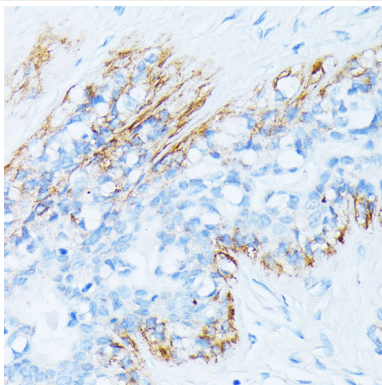
Western blot analysis of extracts of various cell lines, using TPM2 at 1:400 dilution.



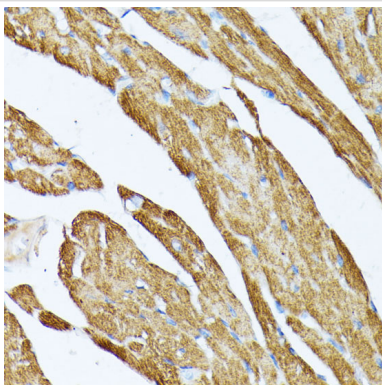
Immunohistochemistry of paraffin-embedded rat heart using TPM2 at dilution of 1:100 (40x lens).



Immunohistochemistry of paraffin-embedded human stomach using TPM2 at dilution of 1:100 (40x lens).



Immunohistochemistry of paraffin-embedded human breast cancer using TPM2 at dilution of 1:100 (40x lens).



Immunohistochemistry of paraffin-embedded mouse heart using TPM2 at dilution of 1:100 (40x lens).

Background

This gene encodes beta-tropomyosin, a member of the actin filament binding protein family, and mainly expressed in slow, type 1 muscle fibers. Mutations in this gene can alter the expression of other sarcomeric tropomyosin proteins, and cause cap disease, nemaline myopathy and distal arthrogryposis syndromes. Alternatively spliced transcript variants encoding different isoforms have been found for this gene.

Note: This product is for in vitro research use only