

## SCTR antibody

Catalog No: #38595

Package Size: #38595-1 50ul #38595-2 100ul

Orders: order@signalwayantibody.com

Support: tech@signalwayantibody.com

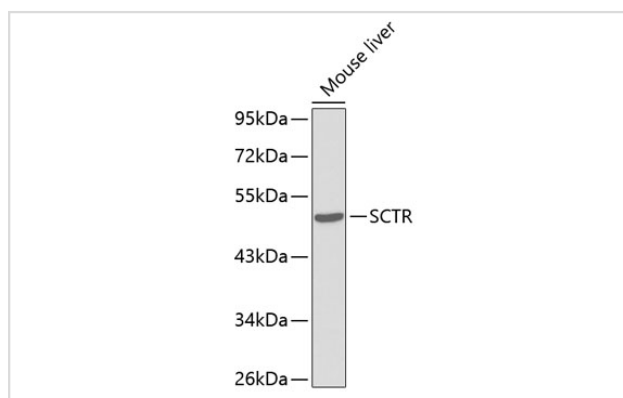
## Description

|                       |  |
|-----------------------|--|
| Product Name          | SCTR antibody  |
| Host Species          | Rabbit   |
| Clonality             | Polyclonal   |
| Purification          | Antibodies were purified by affinity purification using immunogen.   |
| Applications          | WB,IF  |
| Species Reactivity    | Human,Mouse  |
| Specificity           | The antibody detects endogenous level of total SCTR protein.   |
| Immunogen Type        | Peptide  |
| Immunogen Description | A synthetic peptide of human SCTR.   |
| Target Name           | SCTR   |
| Other Names           | SR   |
| Accession No.         | Swiss-Prot#: P47872NCBI Gene ID: 6344  |
| Uniprot               | P47872   |
| GeneID                | 6344;  |
| SDS-PAGE MW           | 50kd   |
| Concentration         | 1.0mg/ml   |
| Formulation           | Supplied at 1.0mg/mL in phosphate buffered saline (without Mg <sup>2+</sup> and Ca <sup>2+</sup> ), pH 7.4, 150mM NaCl, 0.02% sodium azide and 50% glycerol. |
| Storage               | Store at -20°C   |

## Application Details

WB □ 1:500 - 1:2000IF □ 1:50 - 1:100

## Images



Western blot analysis of extracts of mouse liver, using SCTR .

## Background

---

The protein encoded by this gene is a G protein-coupled receptor and belongs to the glucagon-VIP-secretin receptor family. It binds secretin which is the most potent regulator of pancreatic bicarbonate, electrolyte and volume secretion. Secretin and its receptor are suggested to be involved in pancreatic cancer and autism.

---

Note: This product is for in vitro research use only